

2022 Water Quality Reports Now Available



We're proud to offer to you a detailed report on the quality of the water we're supplying to you. Just go to www.aquarionwater.com/wqr. For a paper copy, call 1-800-832-2373 or email waterquality@aquarionwater.com.



Imagine a Day Without Water

October 19, 2023

Imagine a Day Without Water – Including the Way You Get It

This year's Imagine a Day Without Water falls on October 19. Let's hope it's a day without the weather extremes being seen lately, so we can ponder the essential roles that water and the systems that deliver it play in our lives.

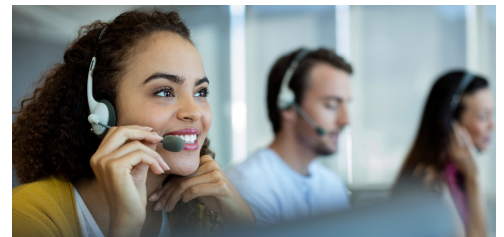
This story goes far beyond sparkling reservoirs and pristine wells. Just as important are all the pumps, dams, valves, filters and pipes bringing that water to our doorsteps.

There's the human infrastructure as well – the crews available 24/7 to respond to emergencies and replace aging water lines...along with people to answer your calls, constantly test and maintain your water's quality plus the treatment systems between you and your water's source.

So when you grab that faucet handle on October 19, take a moment to reflect on all that's behind the water flowing out. Bring your family, friends, and co-workers into the conversation, too. And explore www.aquarionwater.com to learn more about how we're working and investing in the infrastructures that help sustain our daily lives.

Welcome Pinehills Customers!

Early August marked another milestone for Plymouth's innovative mixed-use community, The Pinehills. That's when Aquarion completed its purchase of the community's water system. The Pinehills' 2,700 residents now have the advantages of Aquarion's long track record in providing high-quality water and services to customers in Massachusetts, Connecticut and New Hampshire.



Aquarion representatives were greeted by an enthusiastic crowd of customers during a well-attended open house event on August 16. Pinehills customers had an opportunity to ask questions and learn more about their new water company.

Still have some question? We are only a phone call, email or live chat away.

Did You Know?



Toilets have come a long way in recent decades. Today's popular ultra-low-flow models can use a single gallon per flush, a small fraction of what an older throne might use. Learn more about WaterSense-labeled toilets at www.epa.gov/watersense.