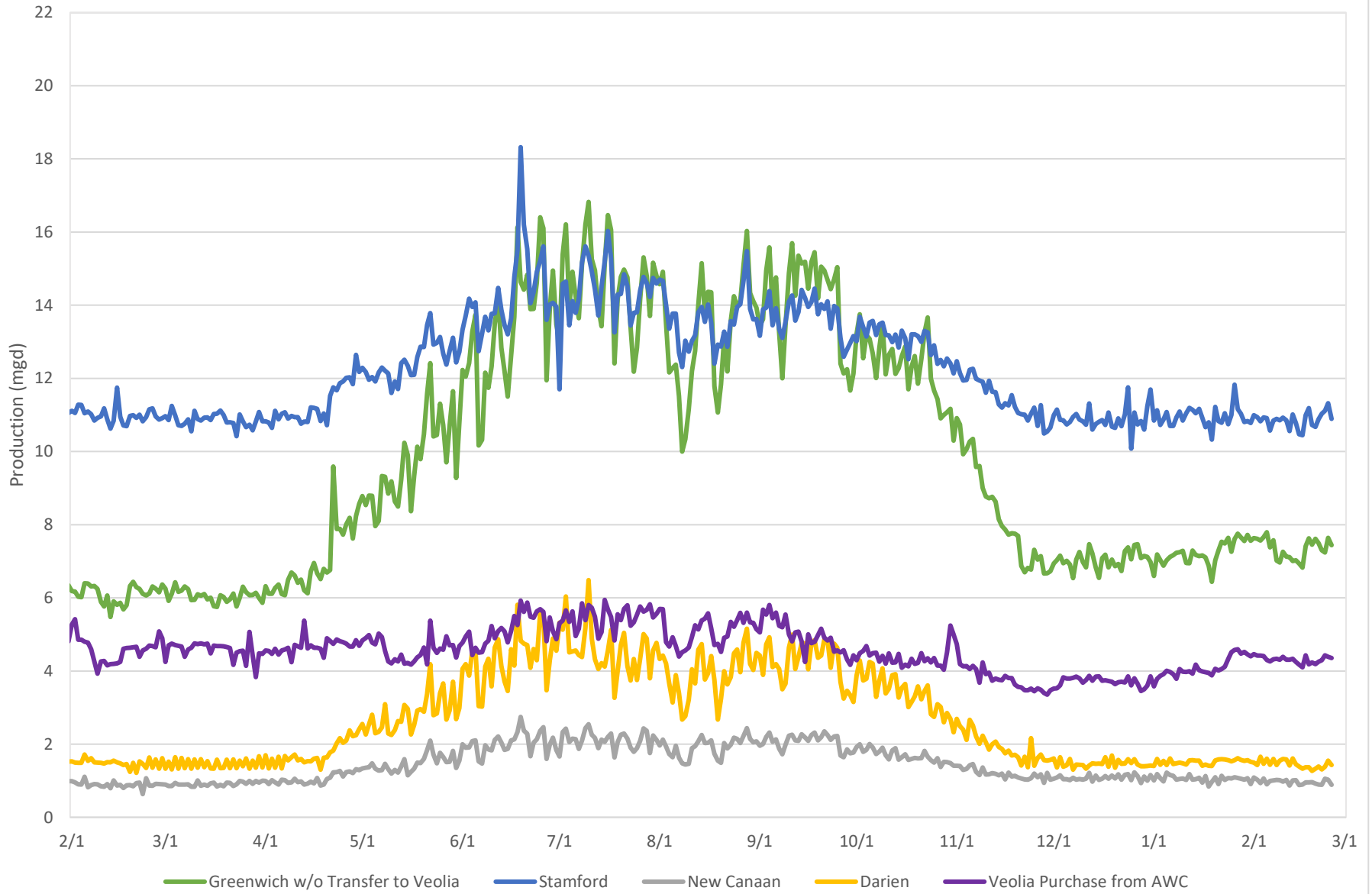


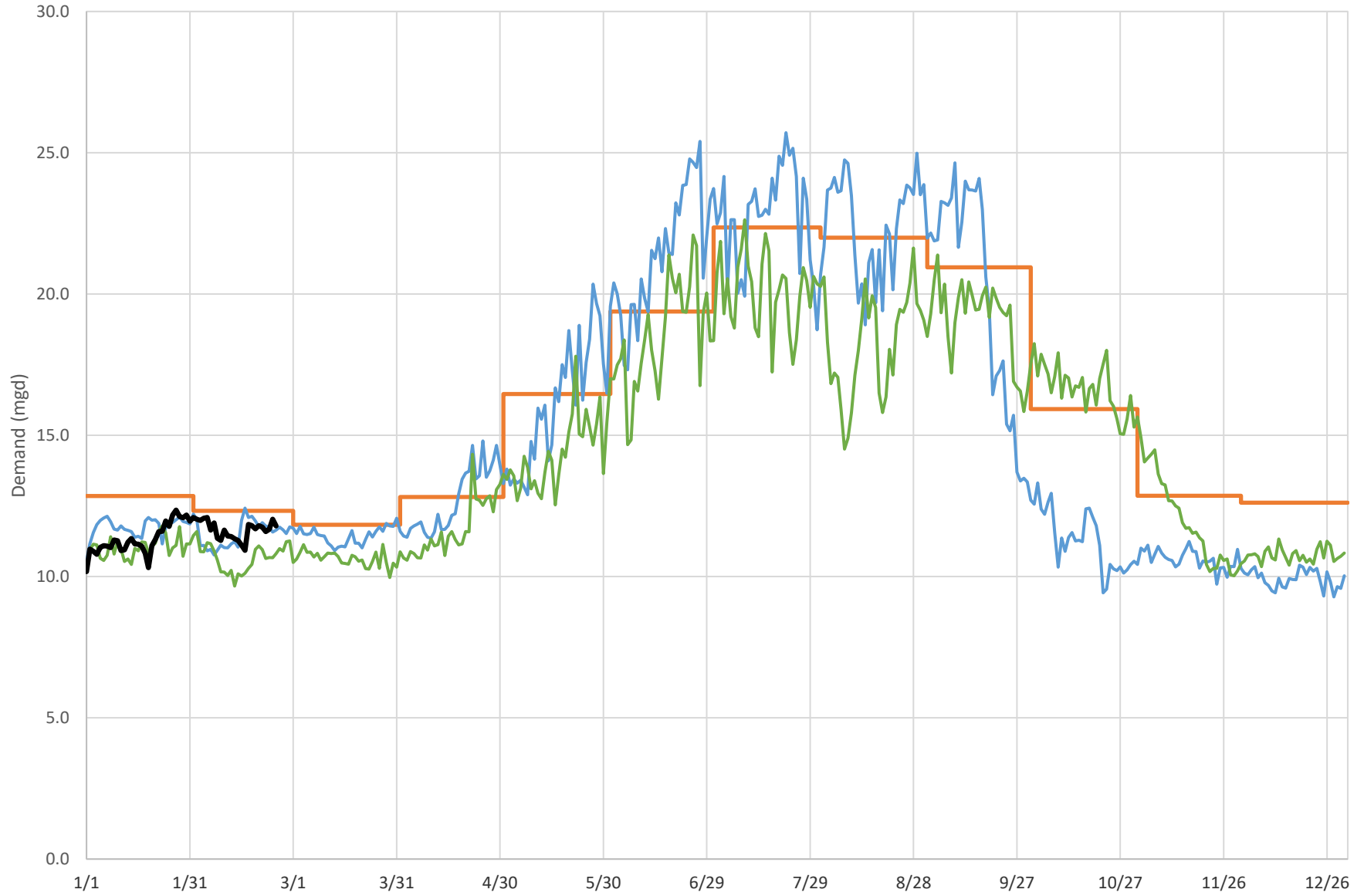


### Regional Water Demands 2024 - 2025





### Greenwich Demand Summary

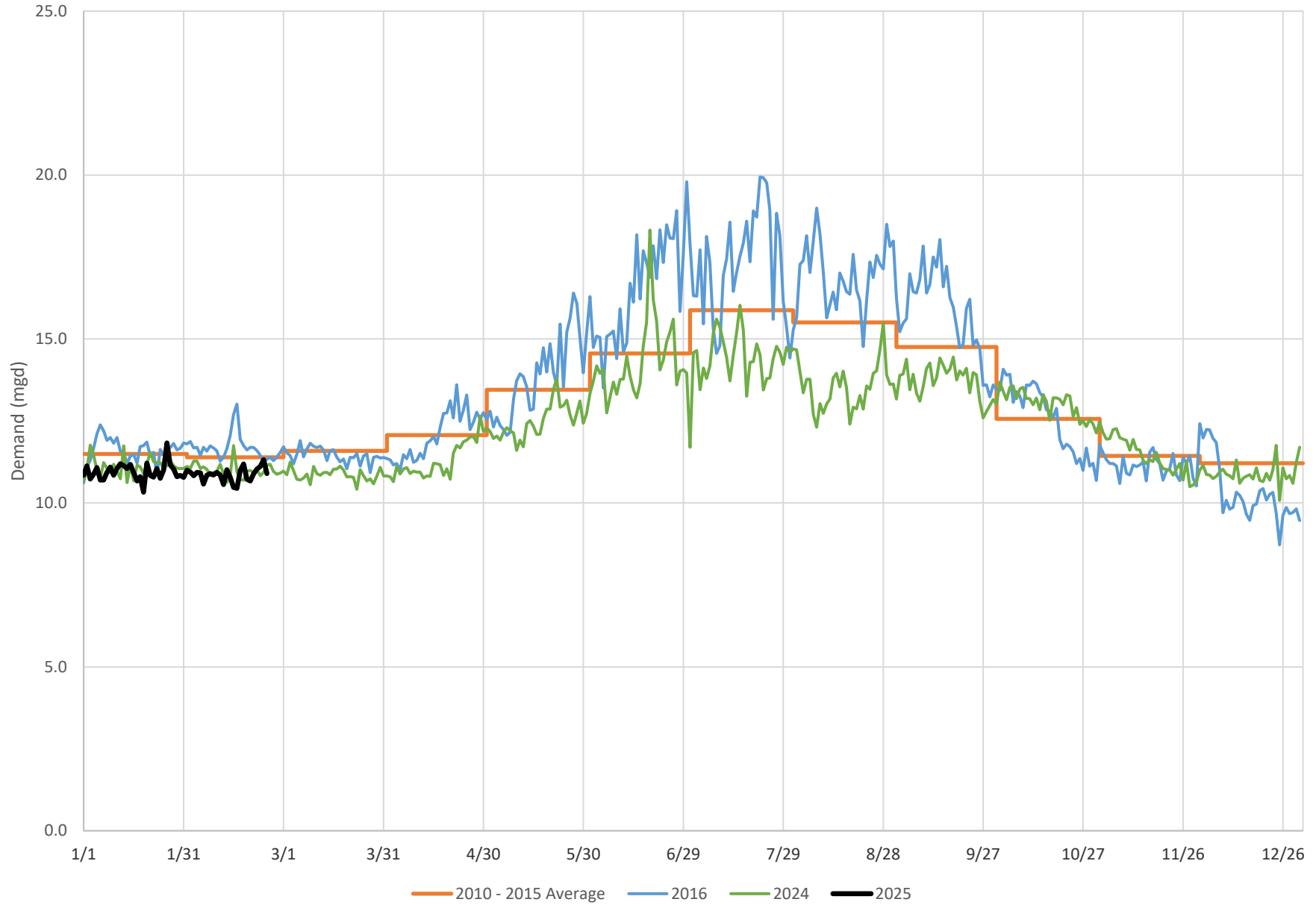


Includes transfers to Veolia

— 2010 - 2015 Average — 2016 — 2024 — 2025

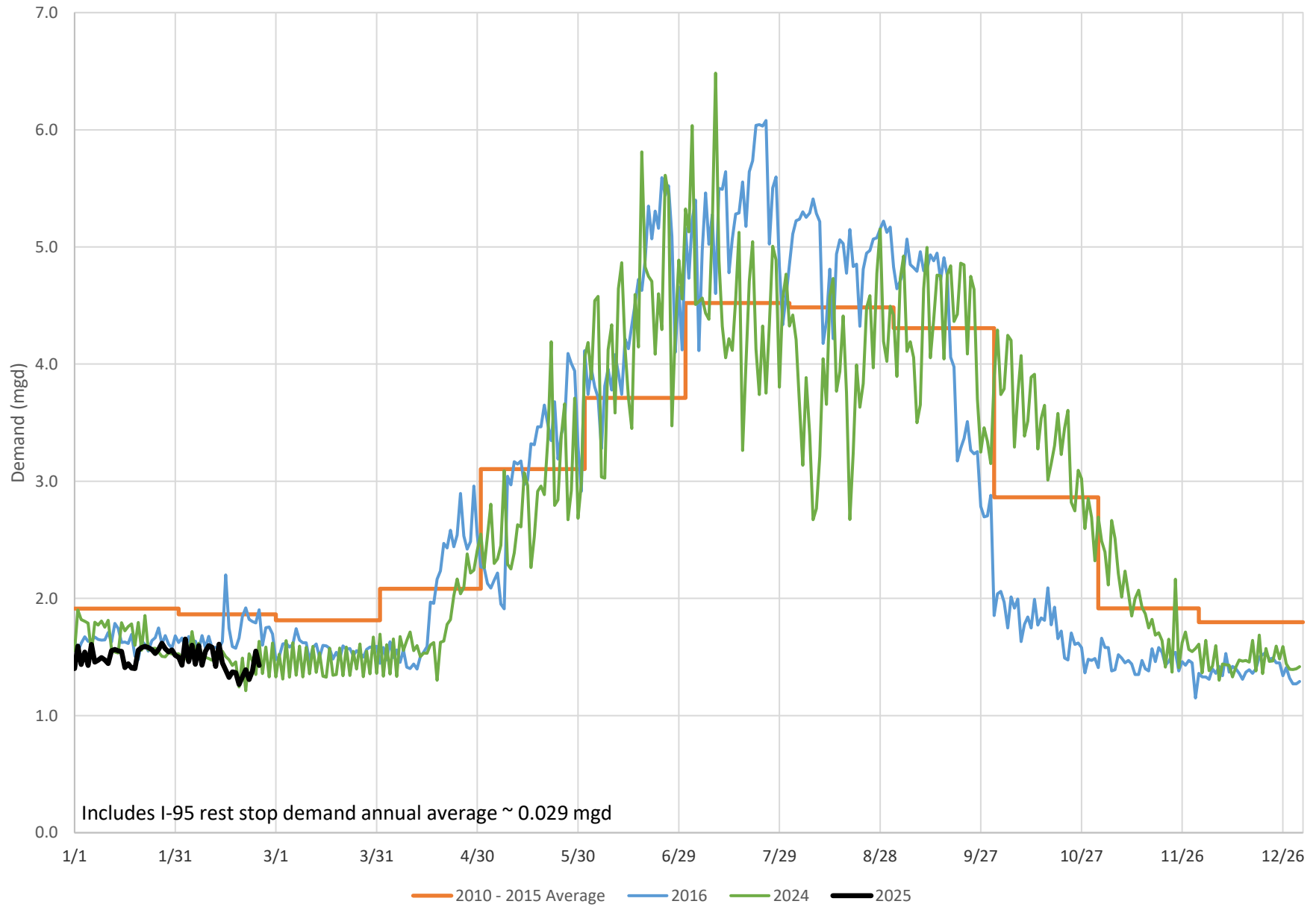


### Stamford Demand Summary



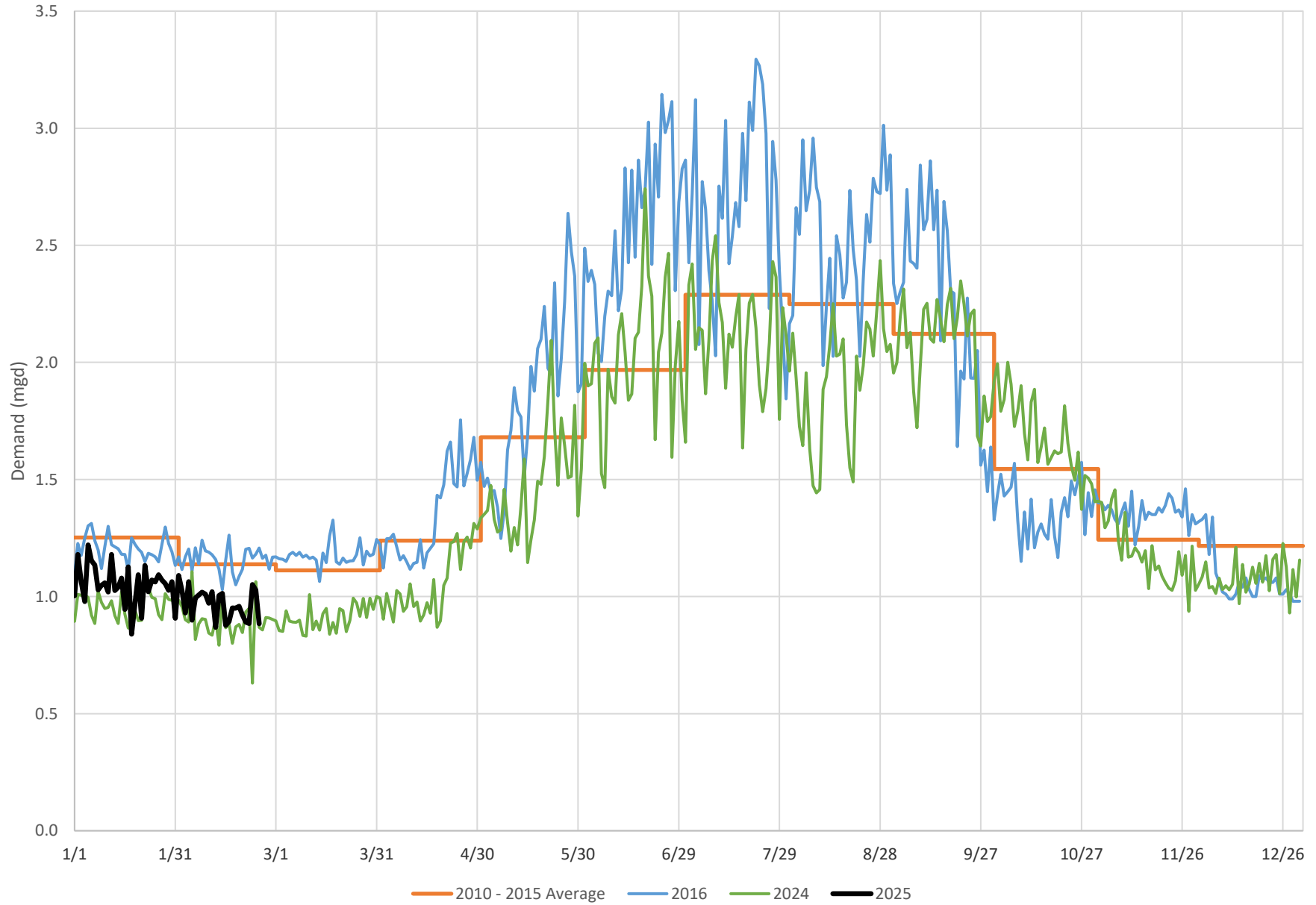


### Darien Demand Summary



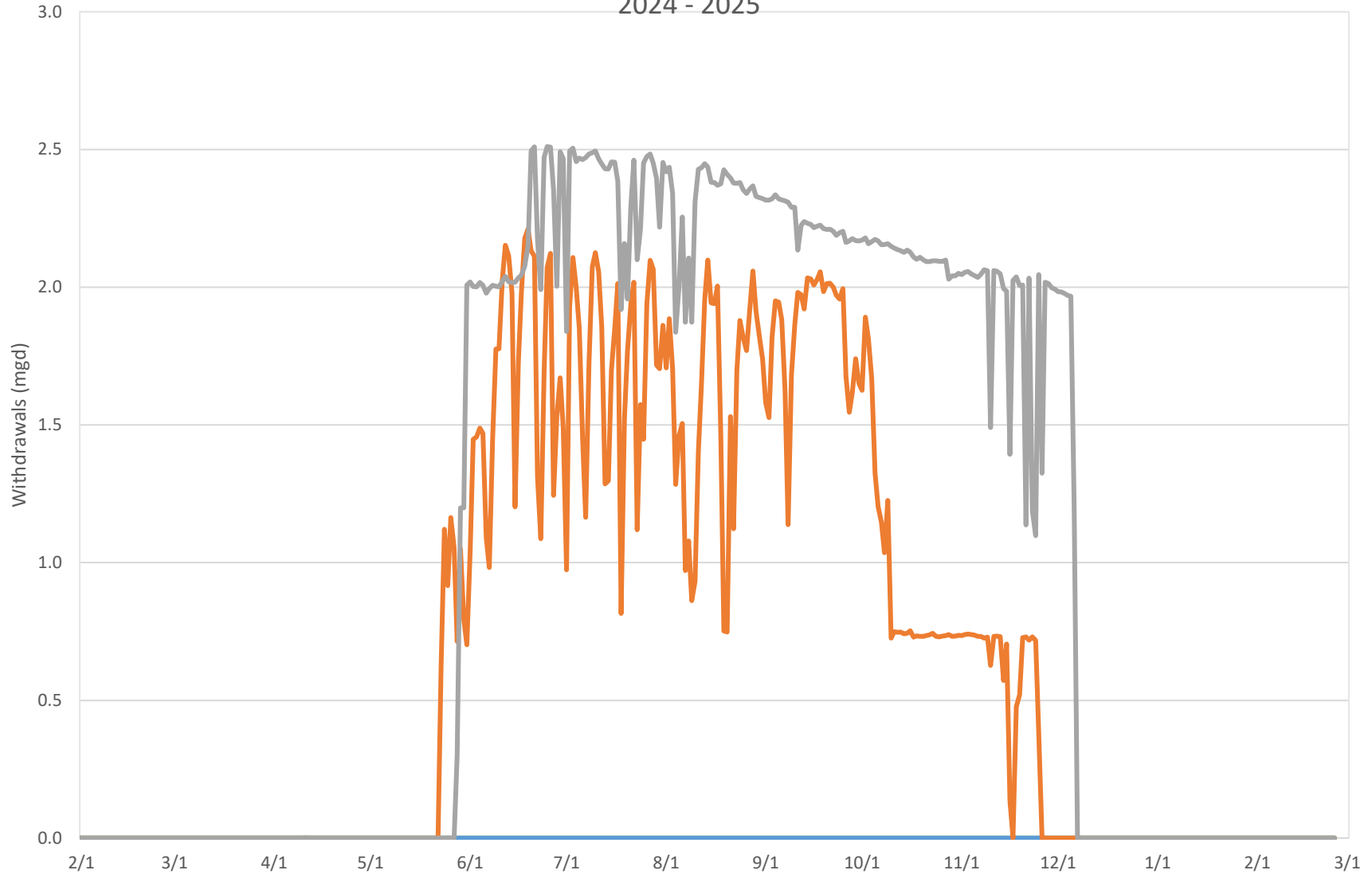


### New Canaan Demand Summary





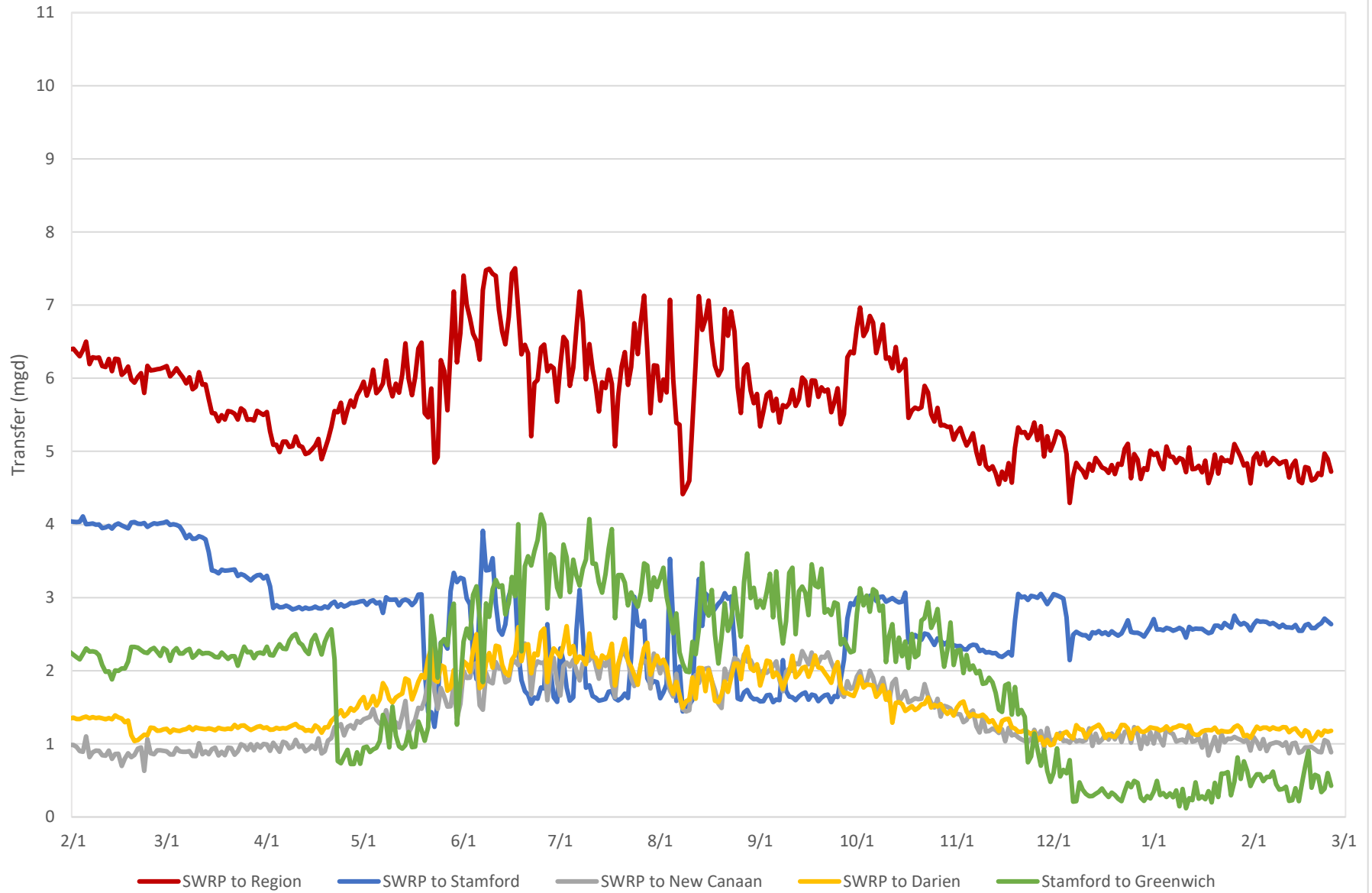
### Well Withdrawals 2024 - 2025



— Rewak (Darien) — Wire Mill (Stamford) — Canal St (Westport) — Coleytown (Westport)

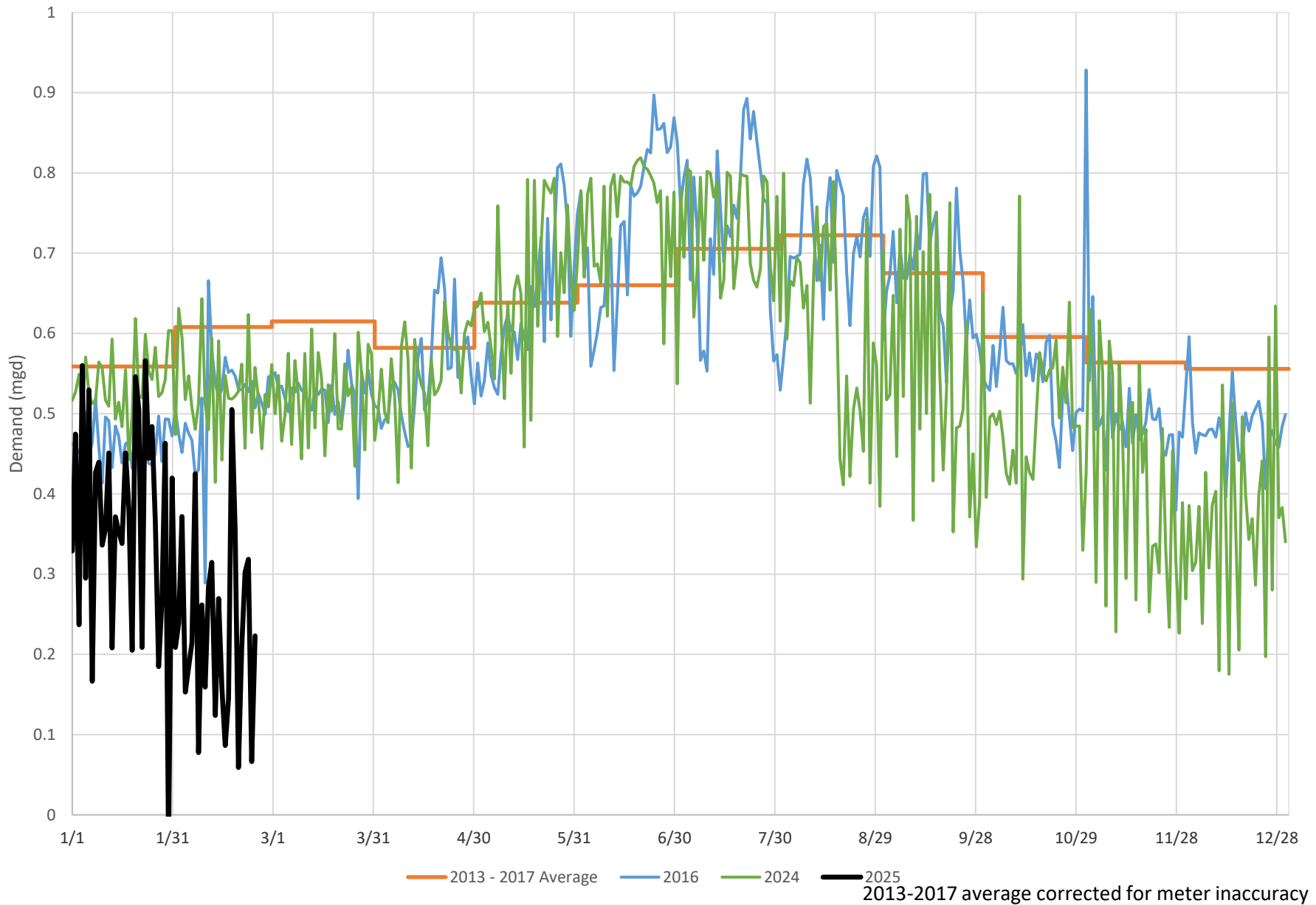


### Regional Water Transfers 2024-2025





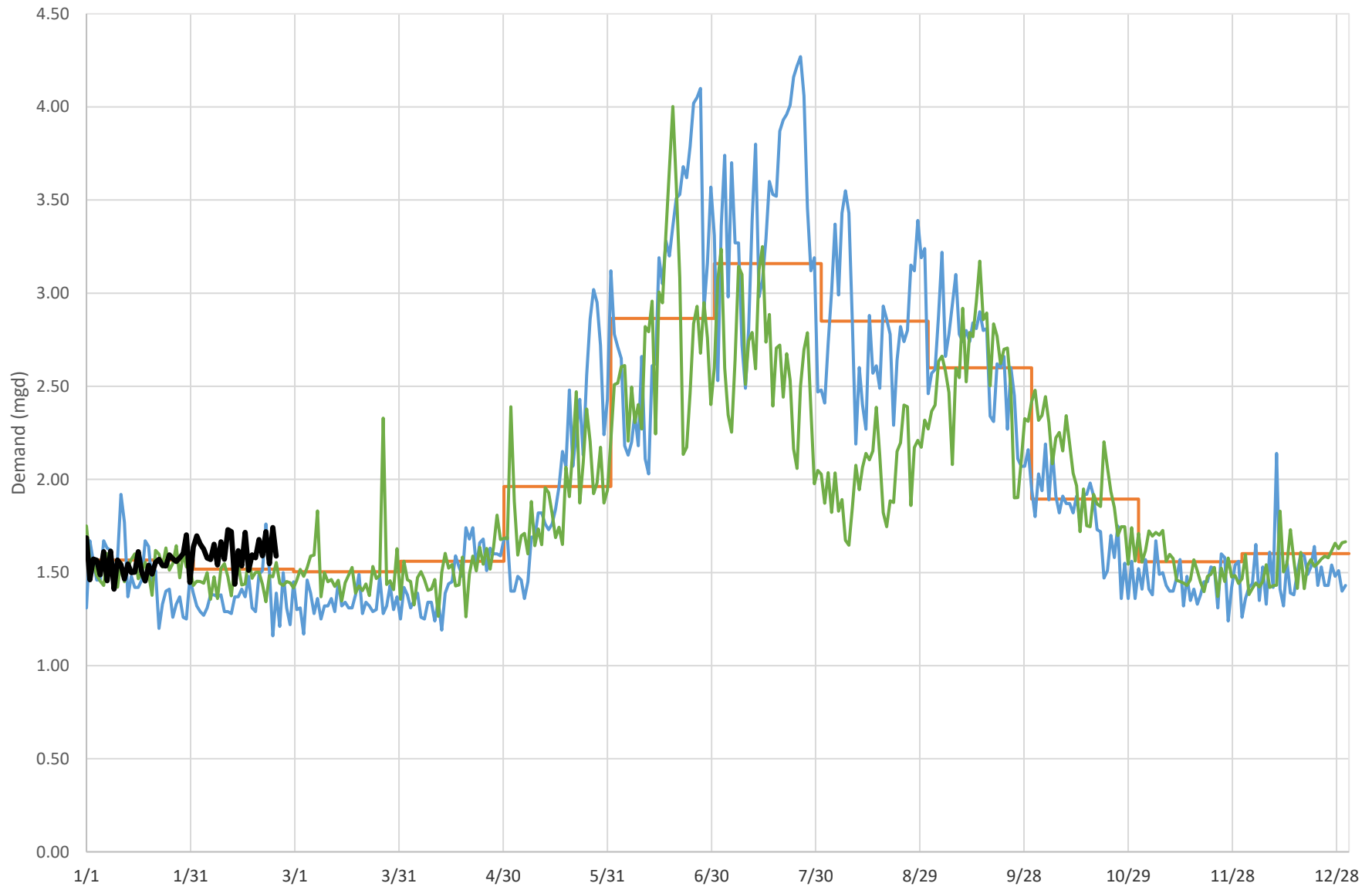
### Town of Newtown Demand Summary







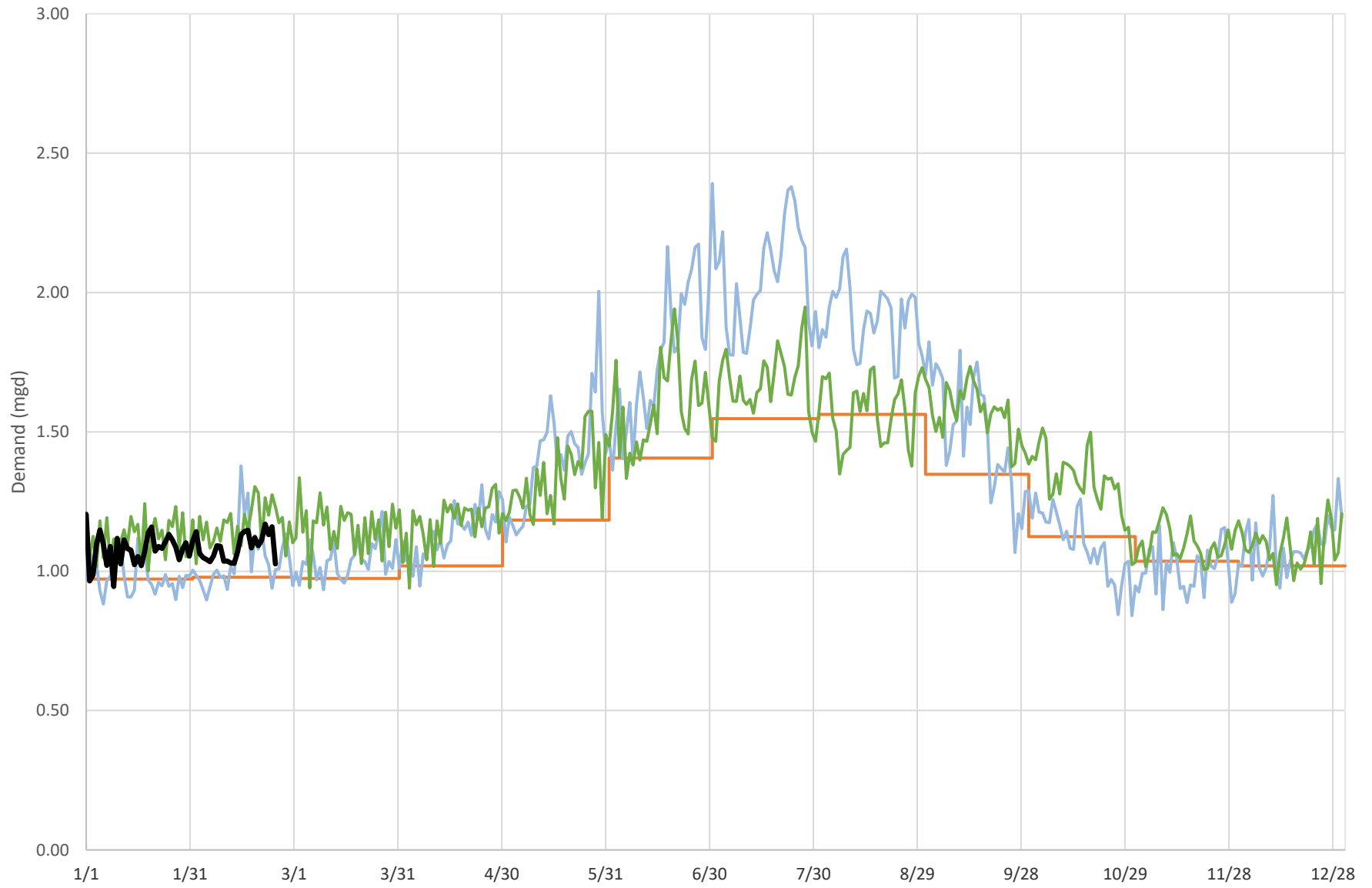
### Simsbury Regional System Demand Summary



Includes Simsbury, Granby and East Granby    — 2016 - 2020 Average    — 2016    — 2024    — 2025



### Mystic System Demand Summary

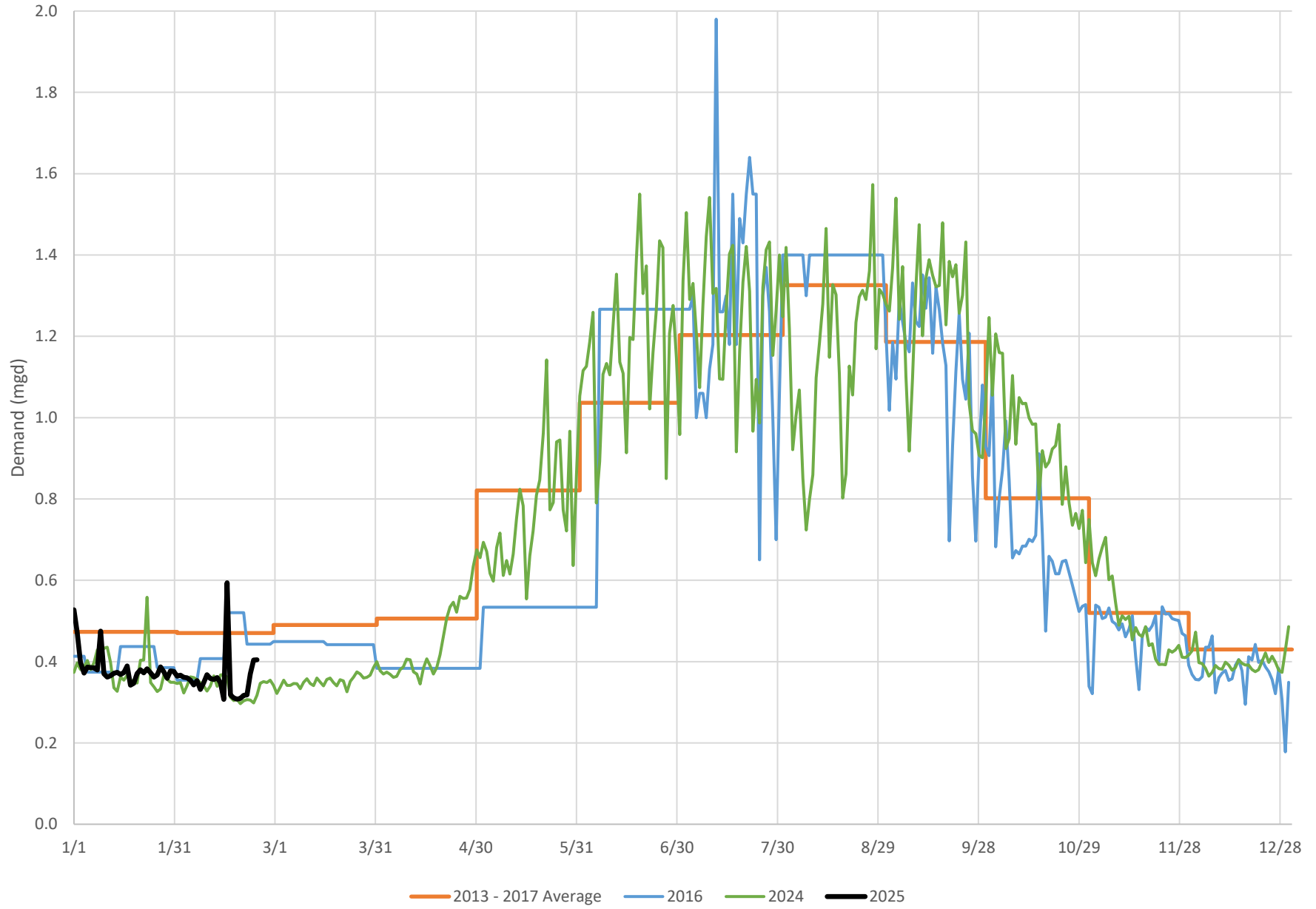


Includes Stonington and Groton

— 2017 - 2021 Average    — 2016    — 2024    — 2025  
— 2017 - 2021 average corrected for meter inaccuracy

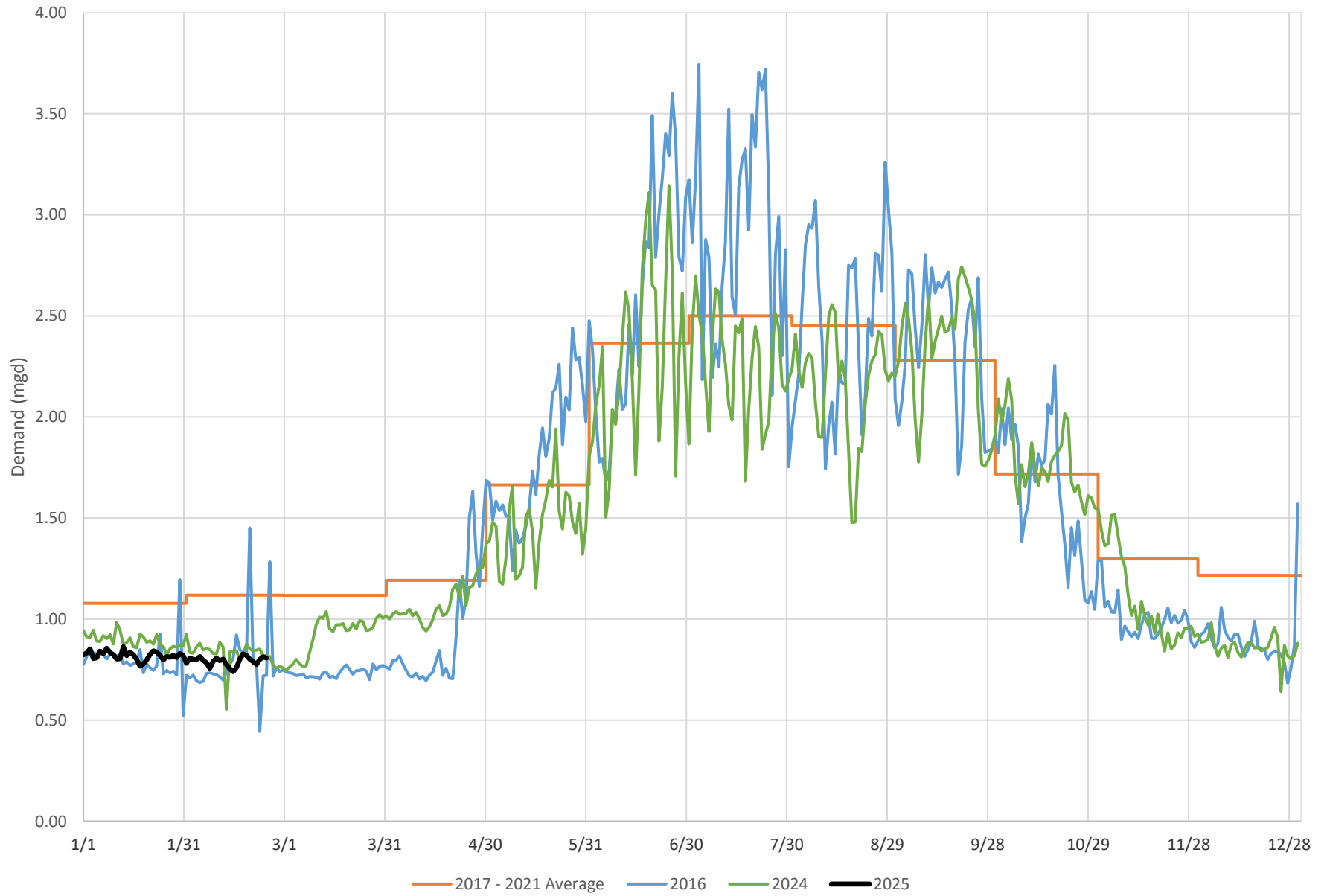


### Westport North Ave Service Area Demand Summary



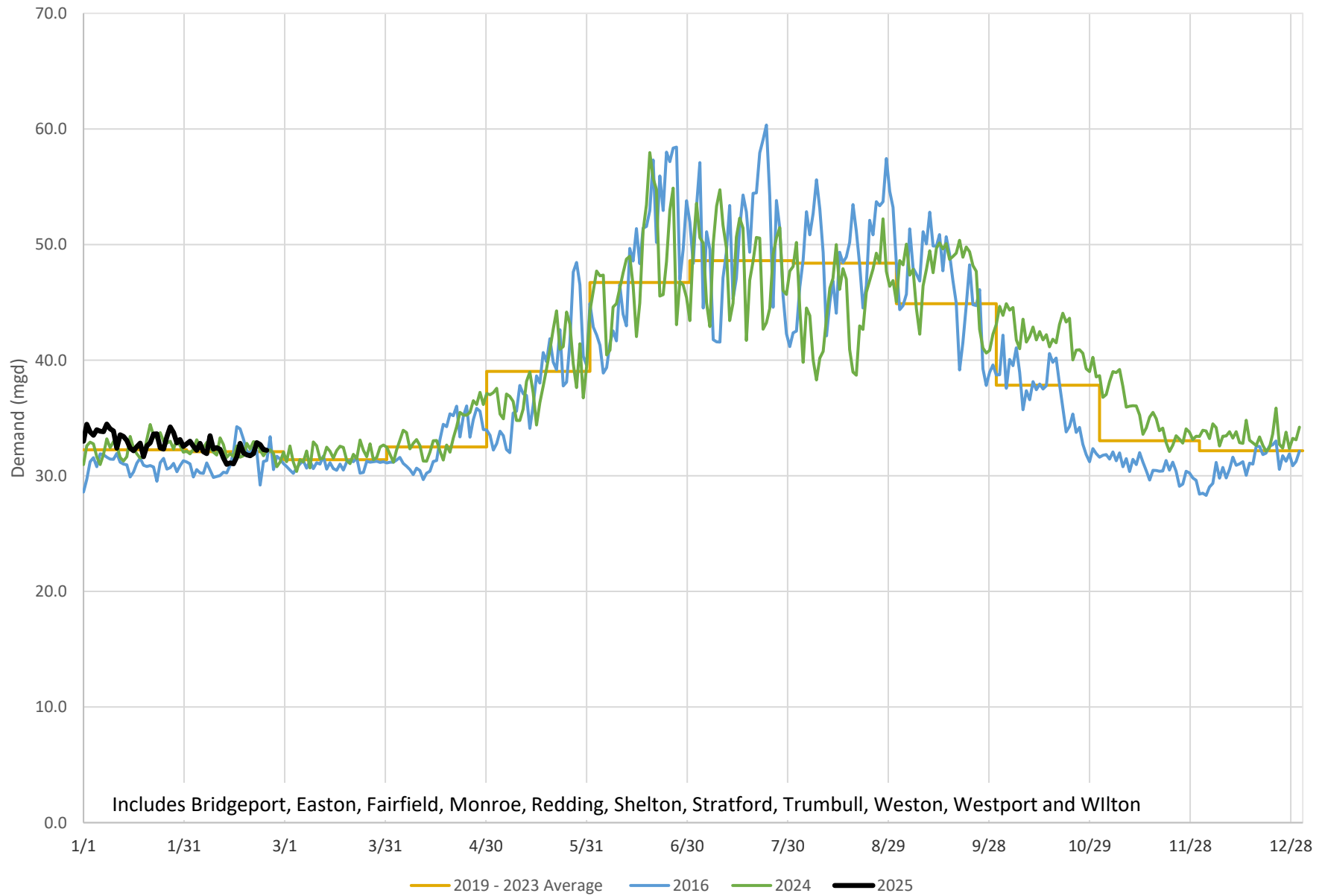


### Fairfield Greenfield Hill Service Area Demand Summary





### Eastern Fairfield County Regional System Demand Summary



Includes Bridgeport, Easton, Fairfield, Monroe, Redding, Shelton, Stratford, Trumbull, Weston, Westport and Wilton



### Town of Ridgefield Demand Summary

