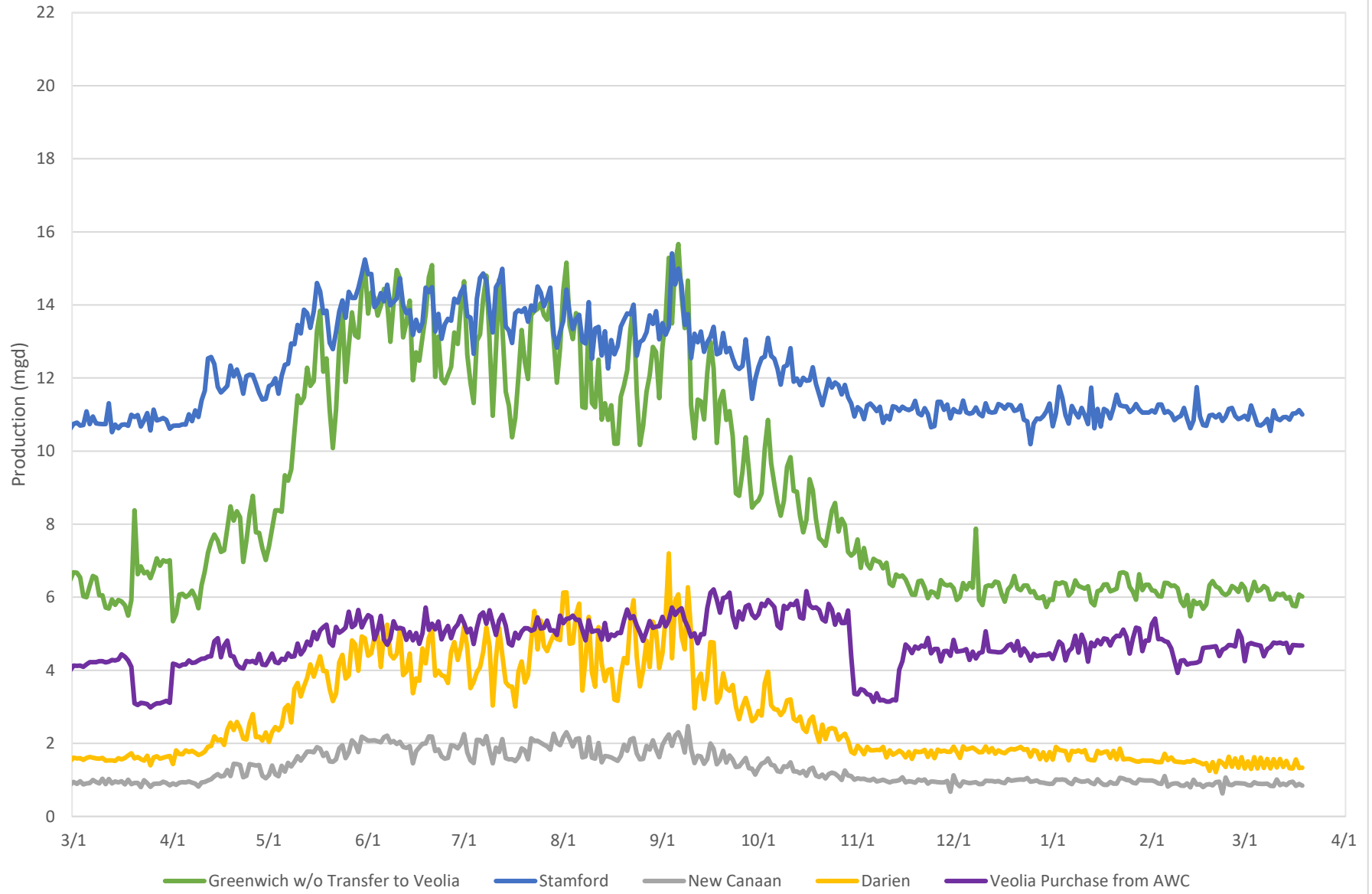


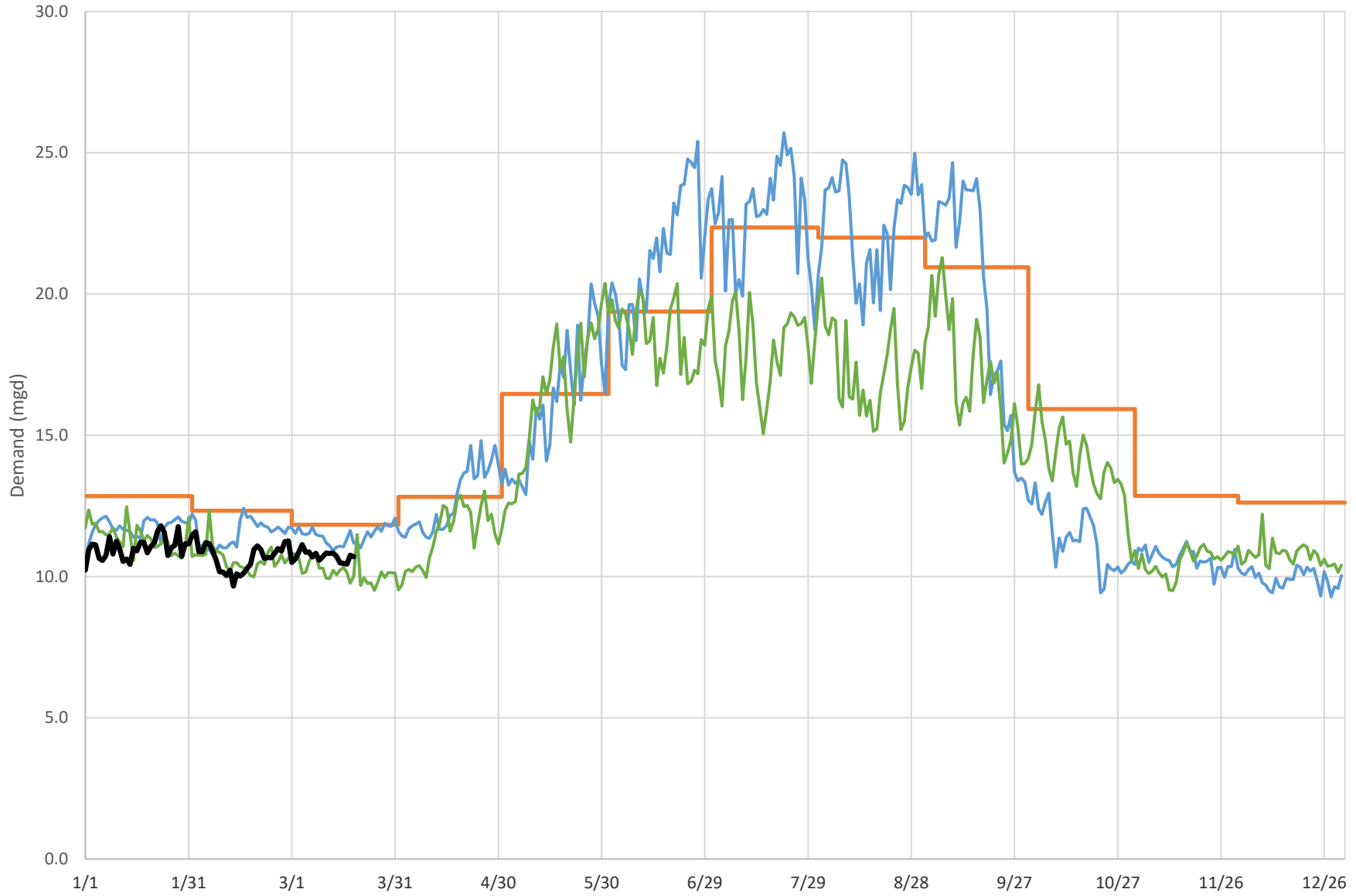


### Regional Water Demands 2023-2024





### Greenwich Demand Summary

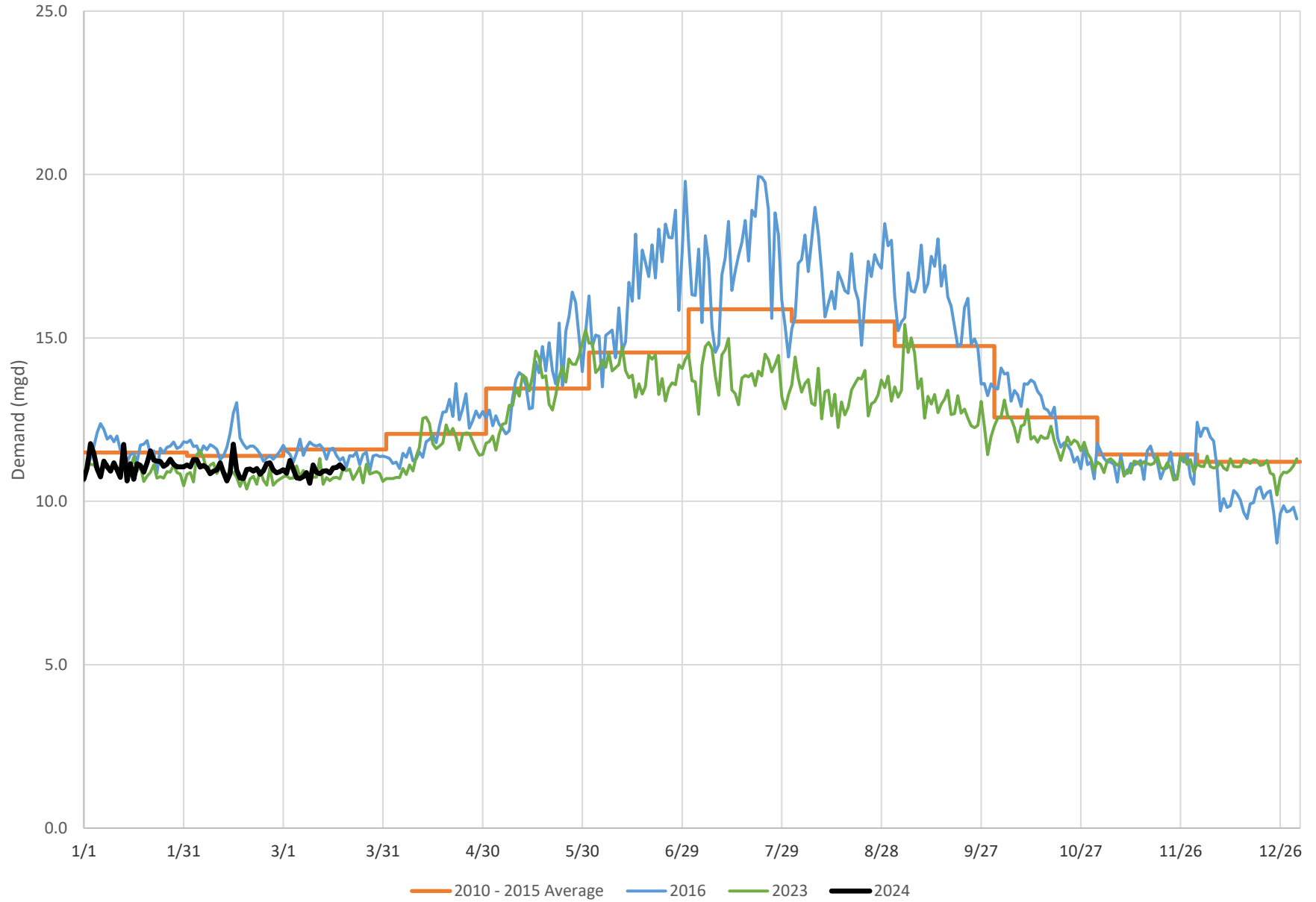


Includes transfers to Veolia

— 2010 - 2015 Average — 2016 — 2023 — 2024

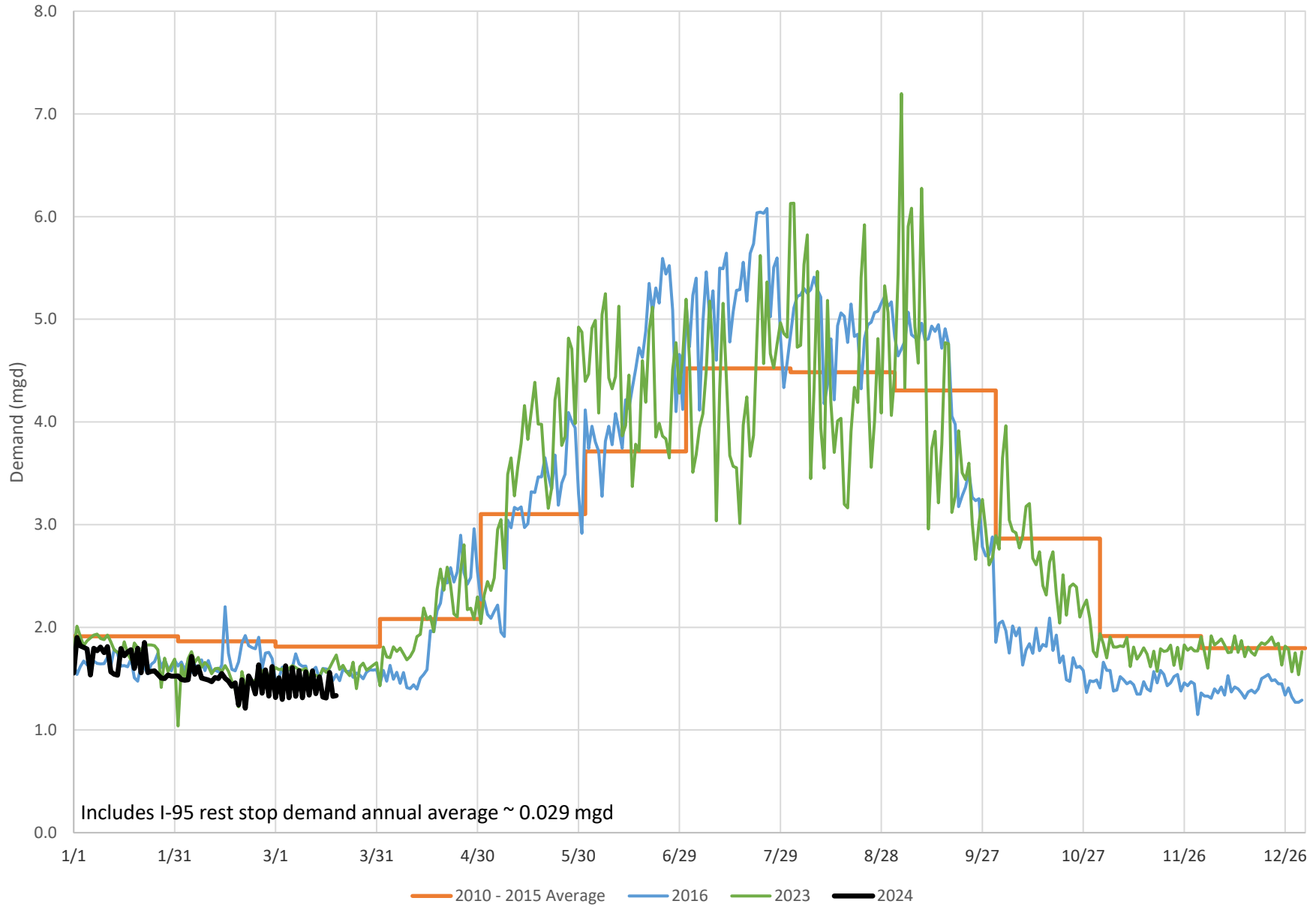


### Stamford Demand Summary



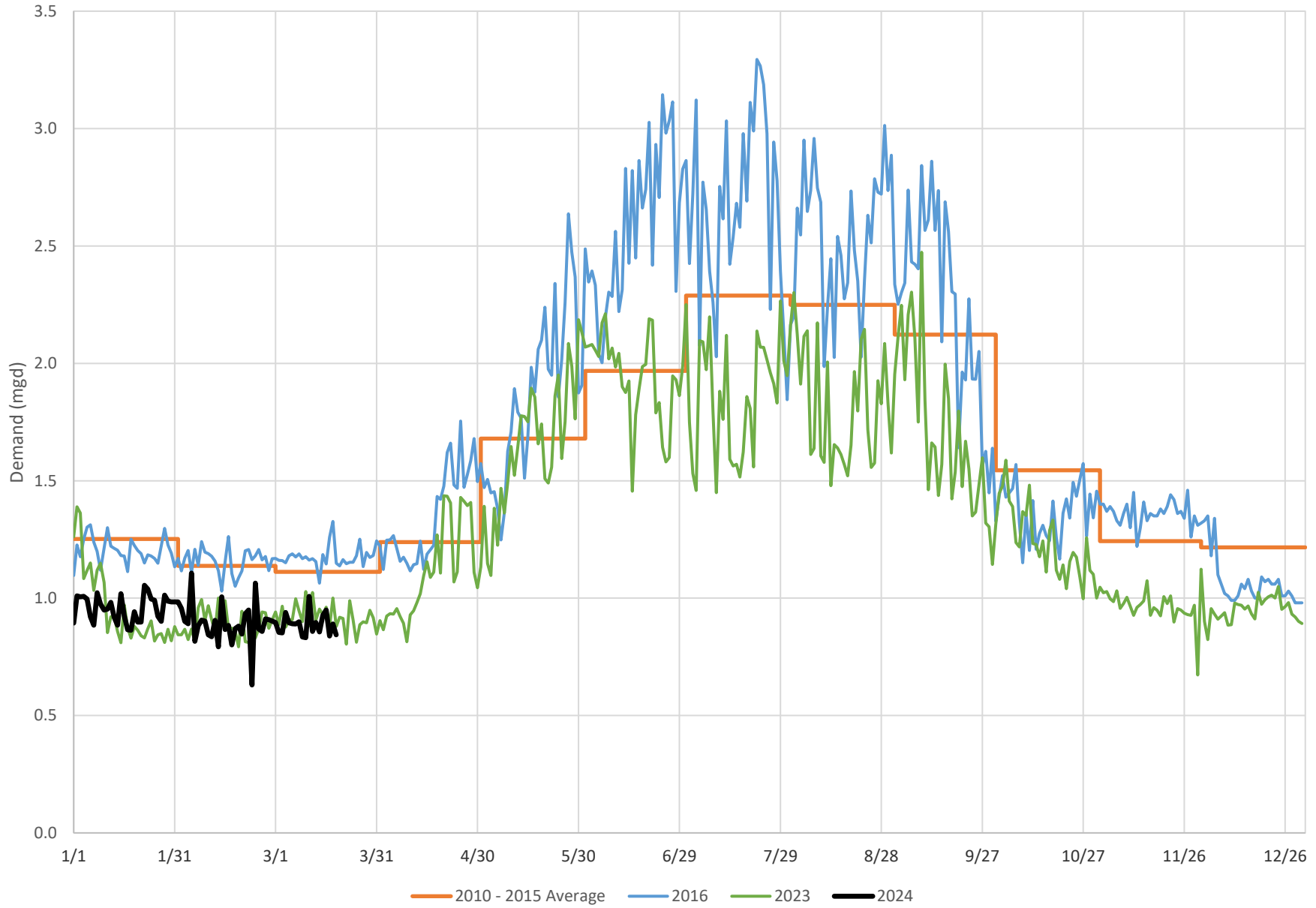


### Darien Demand Summary



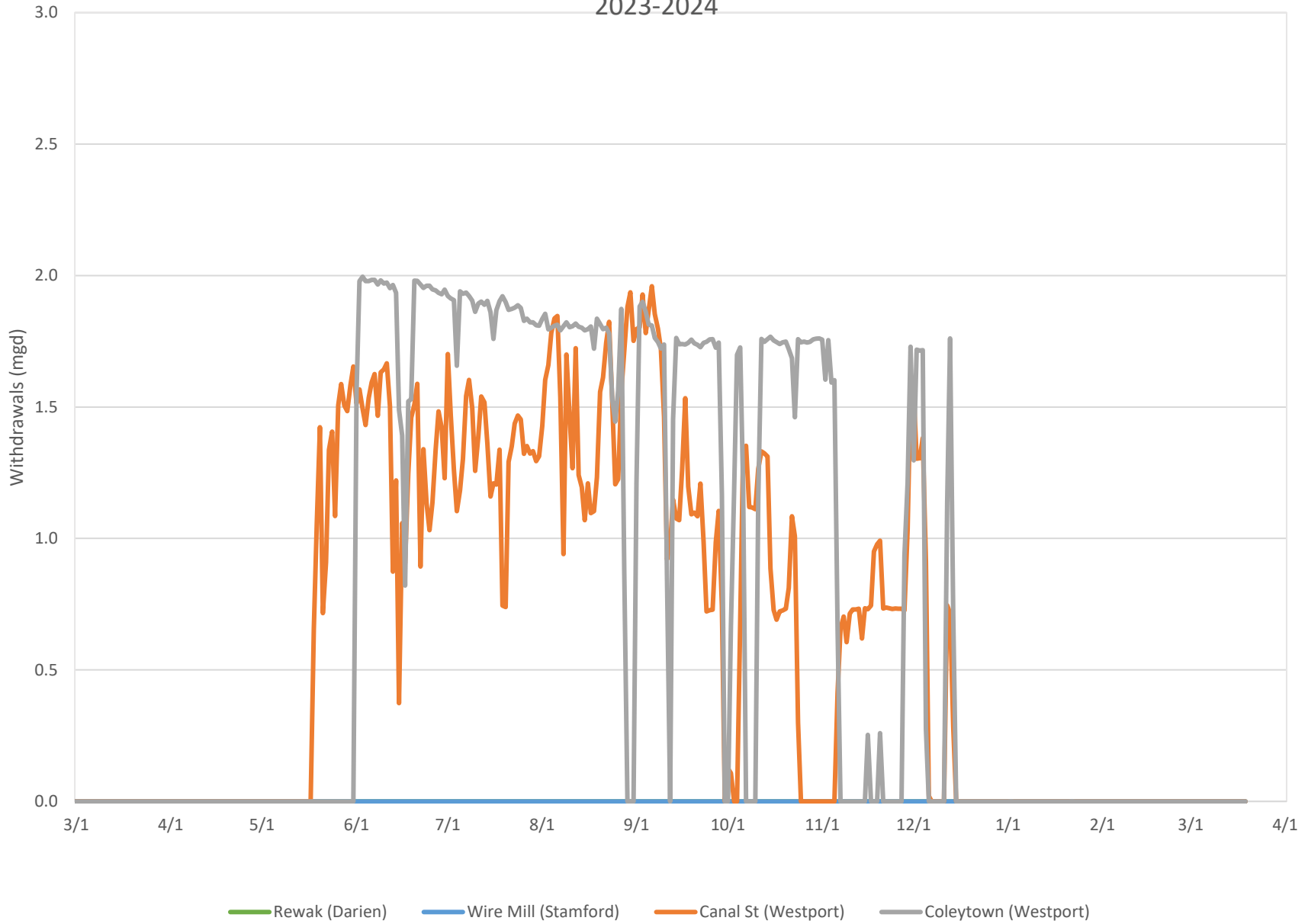


### New Canaan Demand Summary



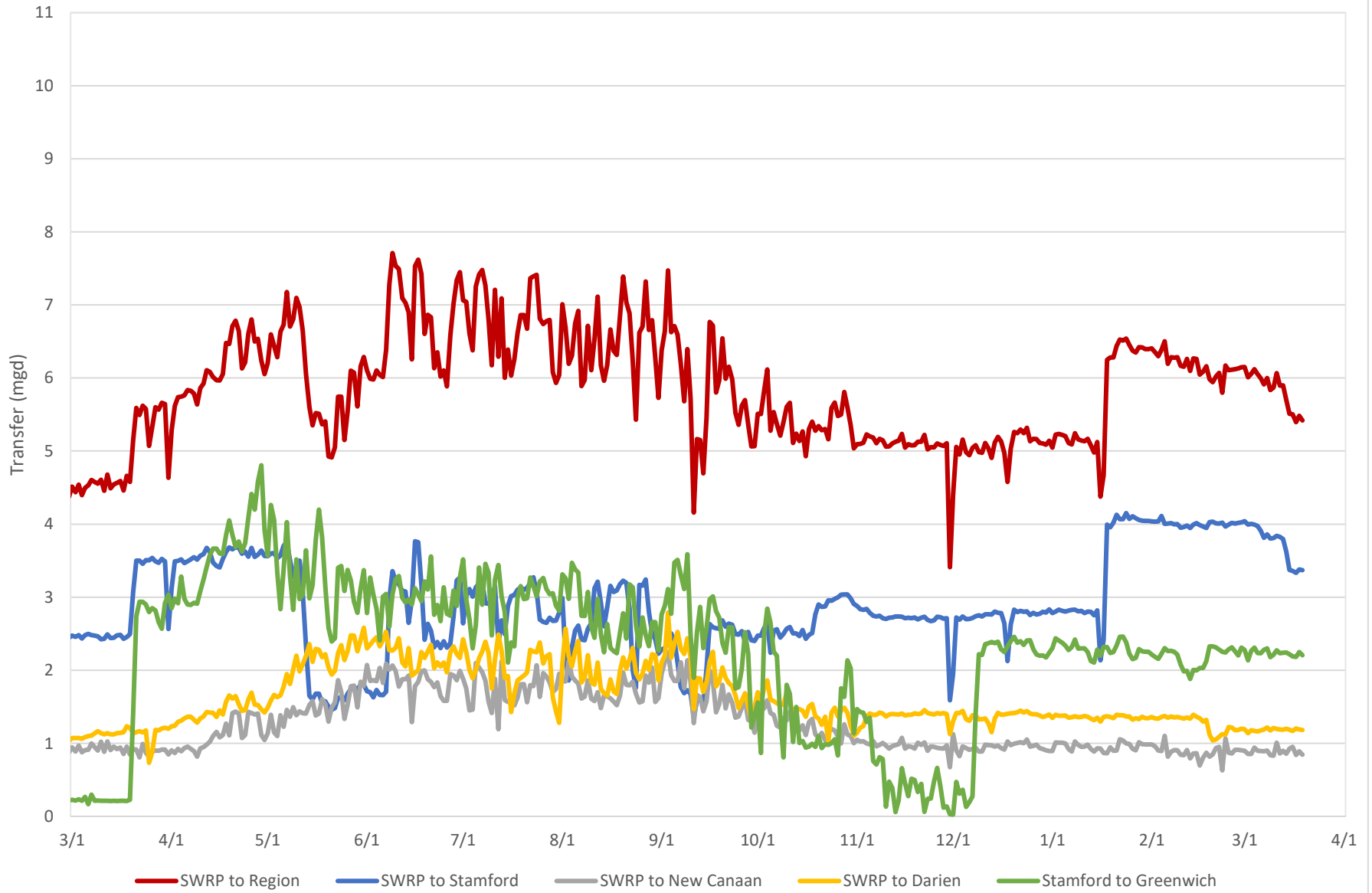


### Well Withdrawals 2023-2024



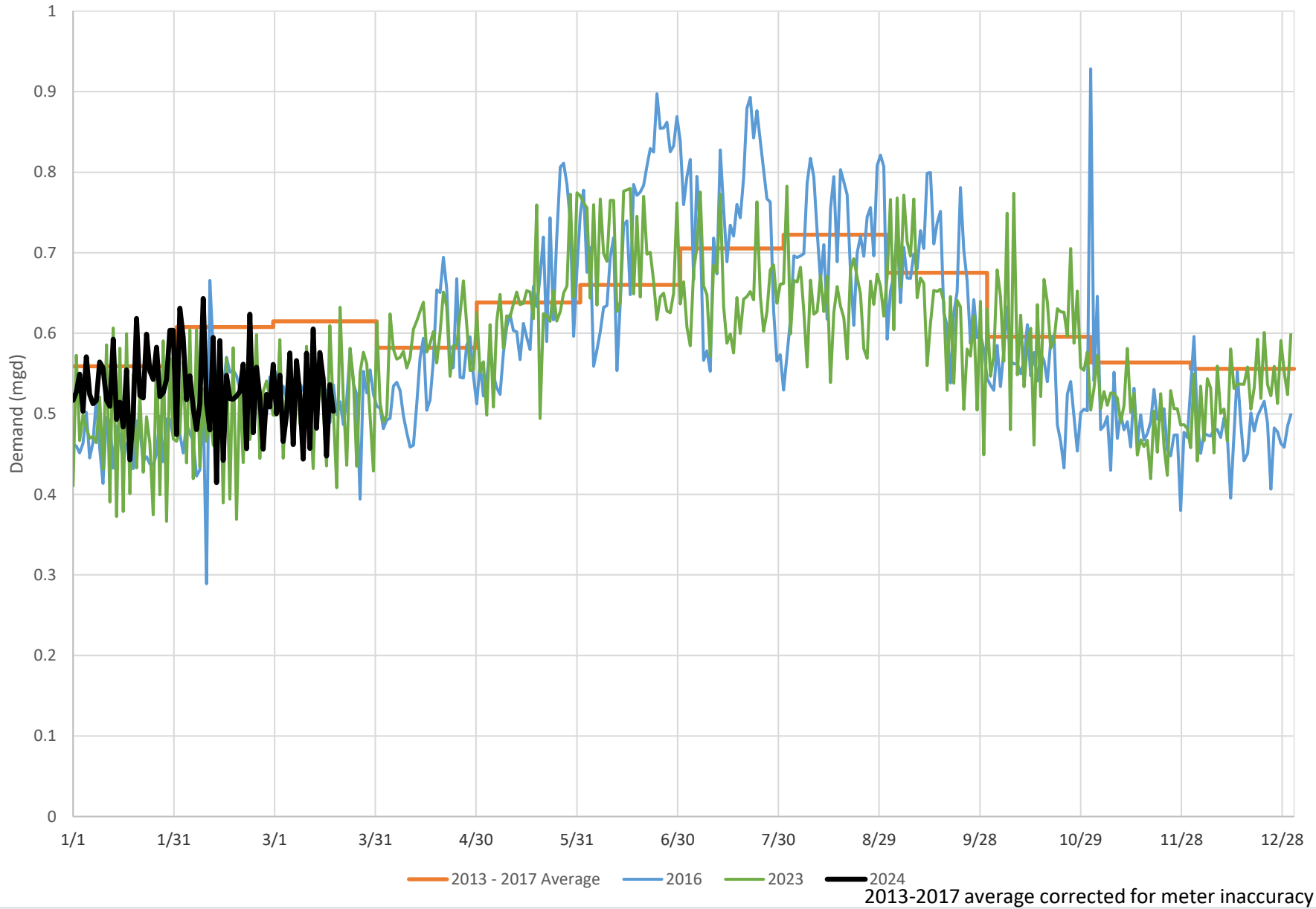


### Regional Water Transfers 2023-2024





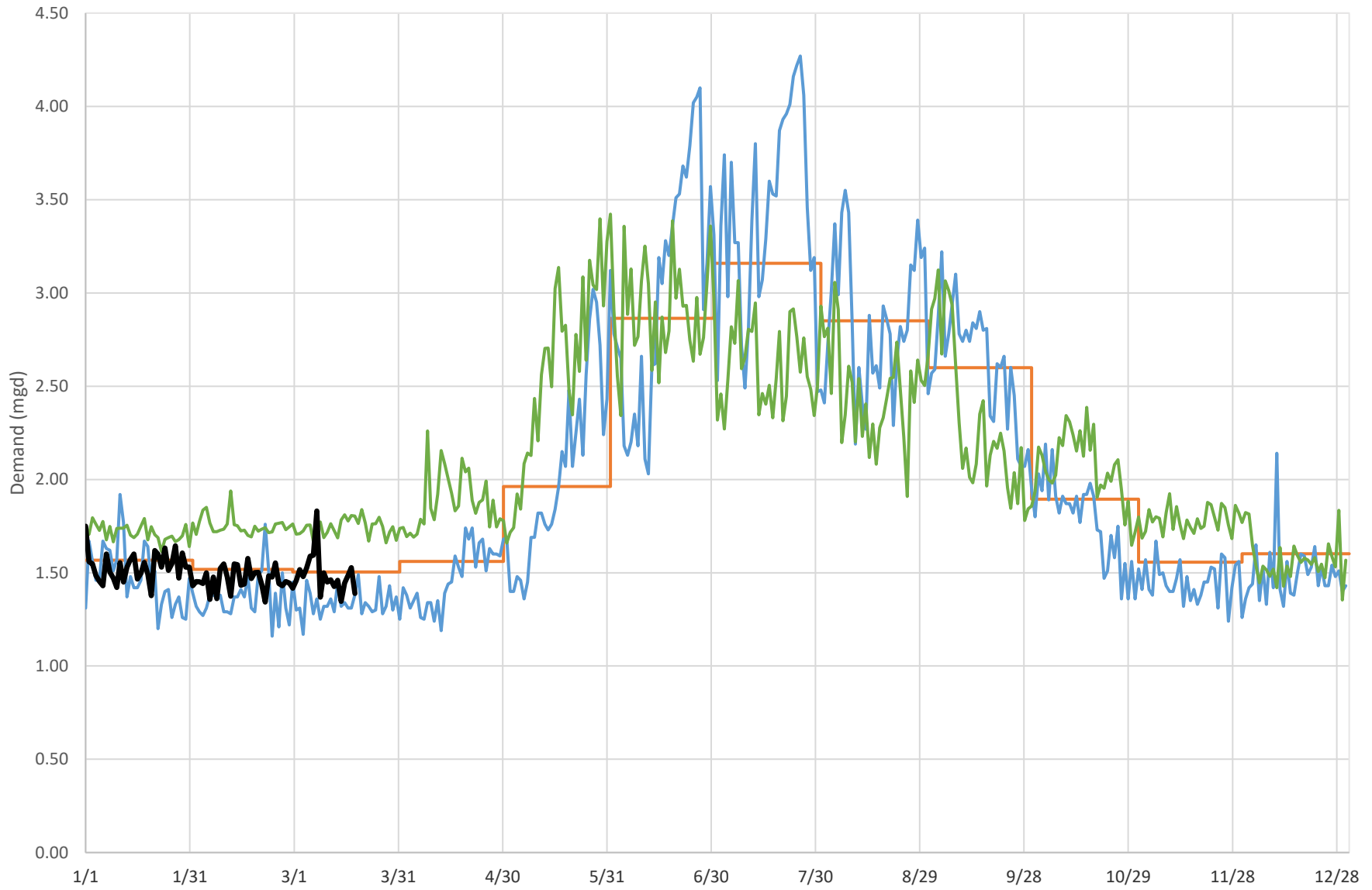
### Town of Newtown Demand Summary







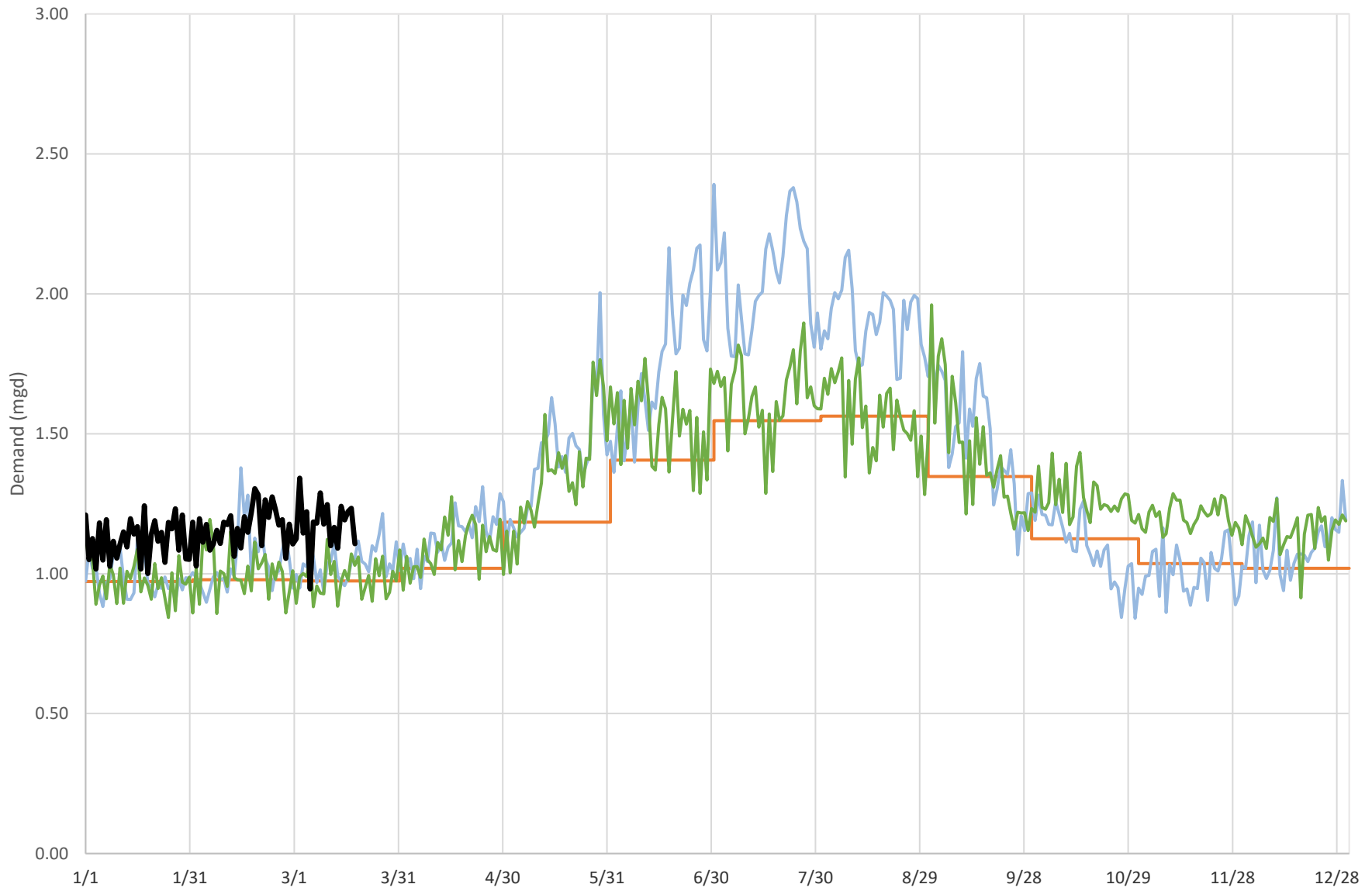
### Simsbury System Demand Summary



Includes Simsbury, Granby and East Granby — 2016 - 2020 Average — 2016 — 2023 — 2024



### Mystic System Demand Summary

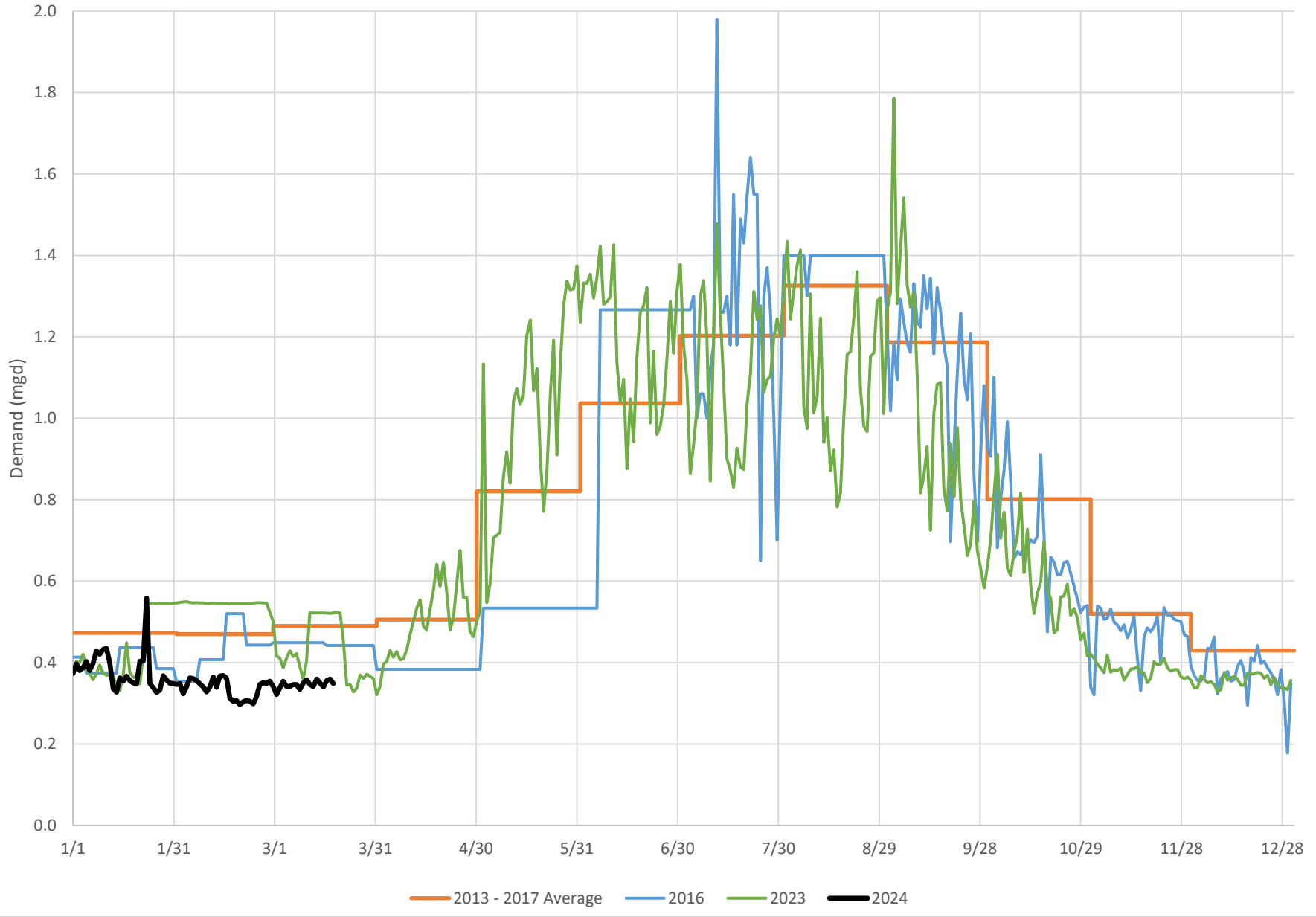


Includes Stonington and Groton

— 2017 - 2021 Average    — 2016    — 2023    — 2024  
2017 - 2021 average corrected for meter inaccuracy



### Westport North Ave Service Area Demand Summary





### Fairfield Greenfield Hill Service Area Demand Summary

