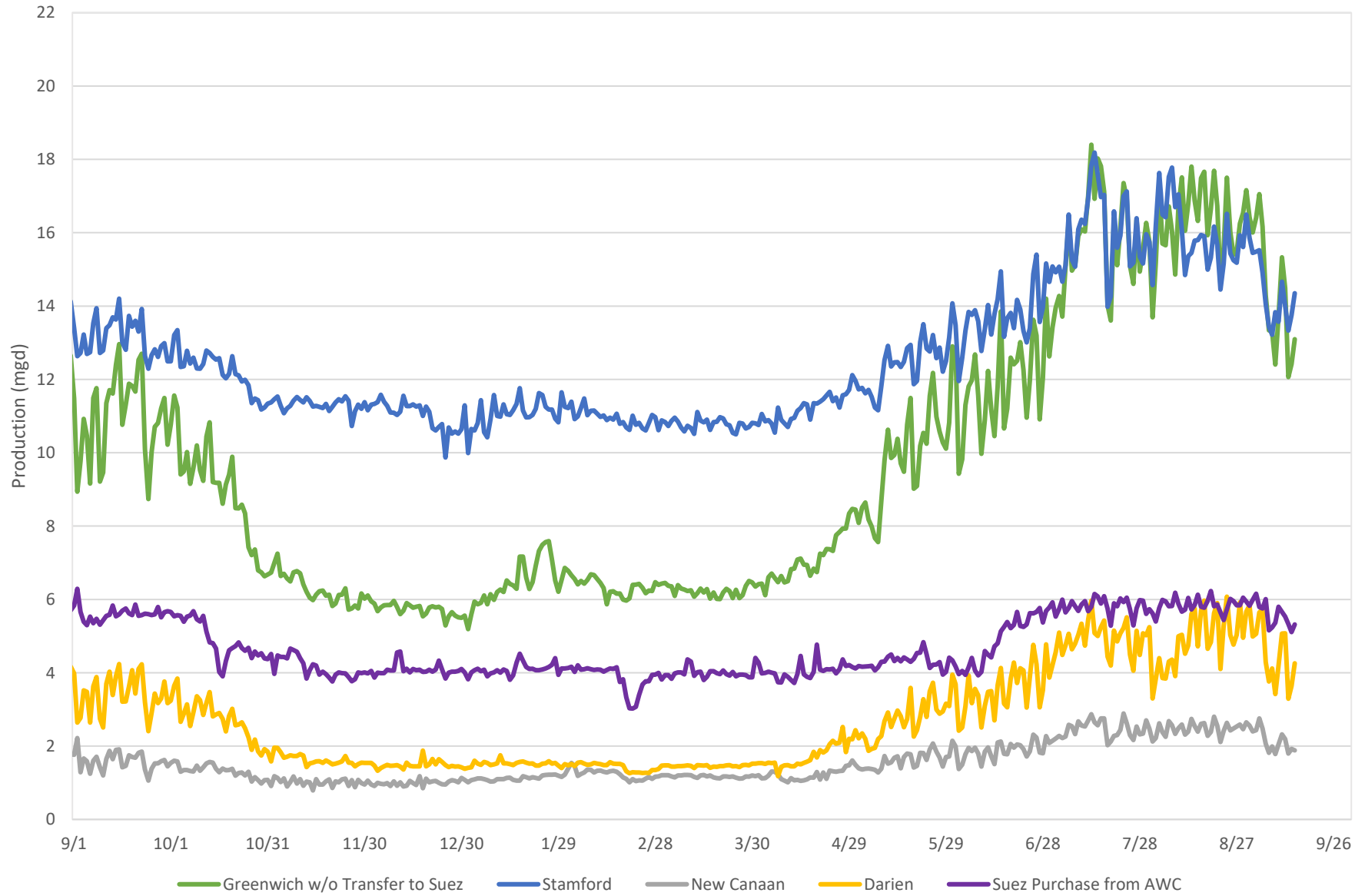


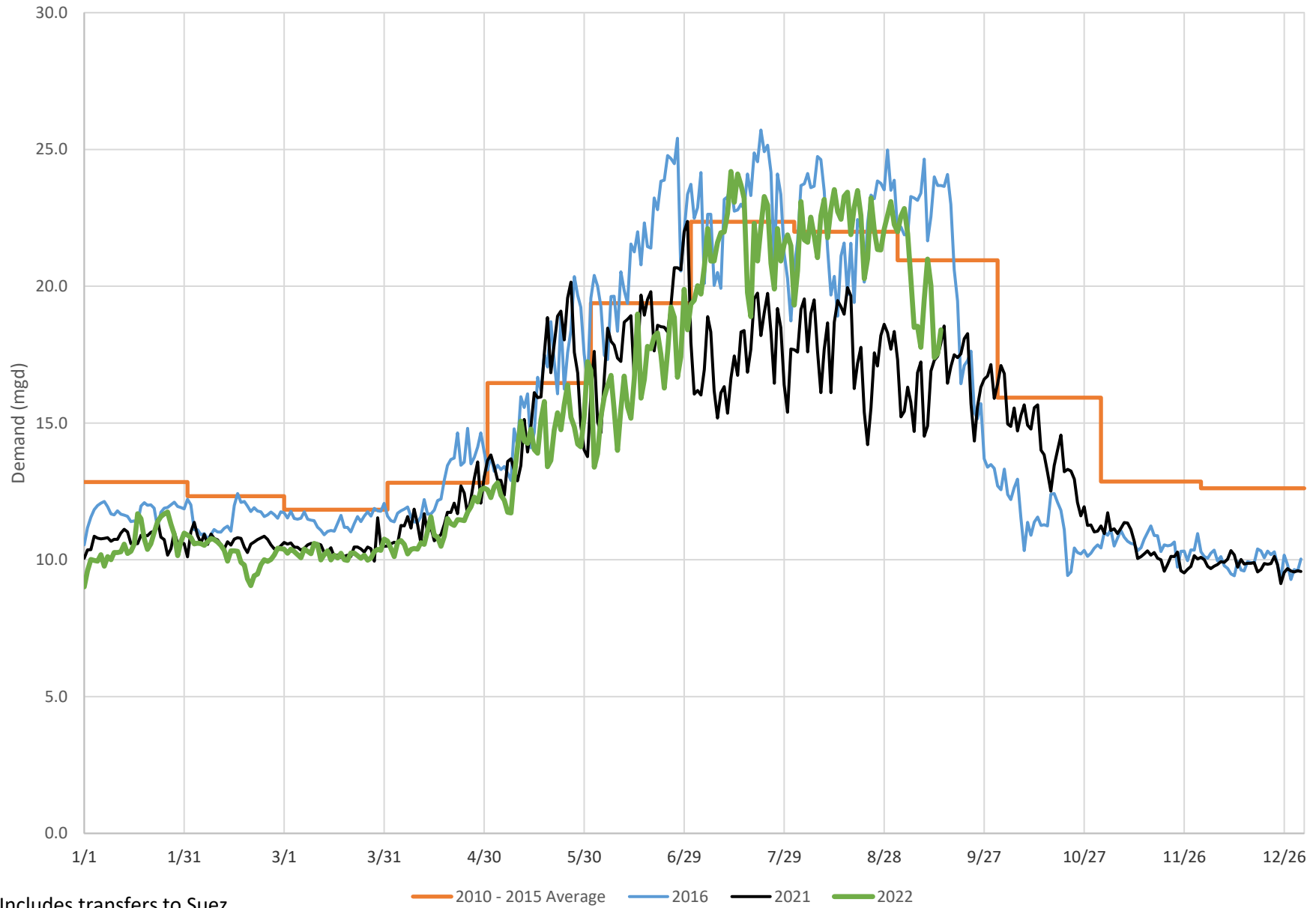


### Regional Water Demands 2022





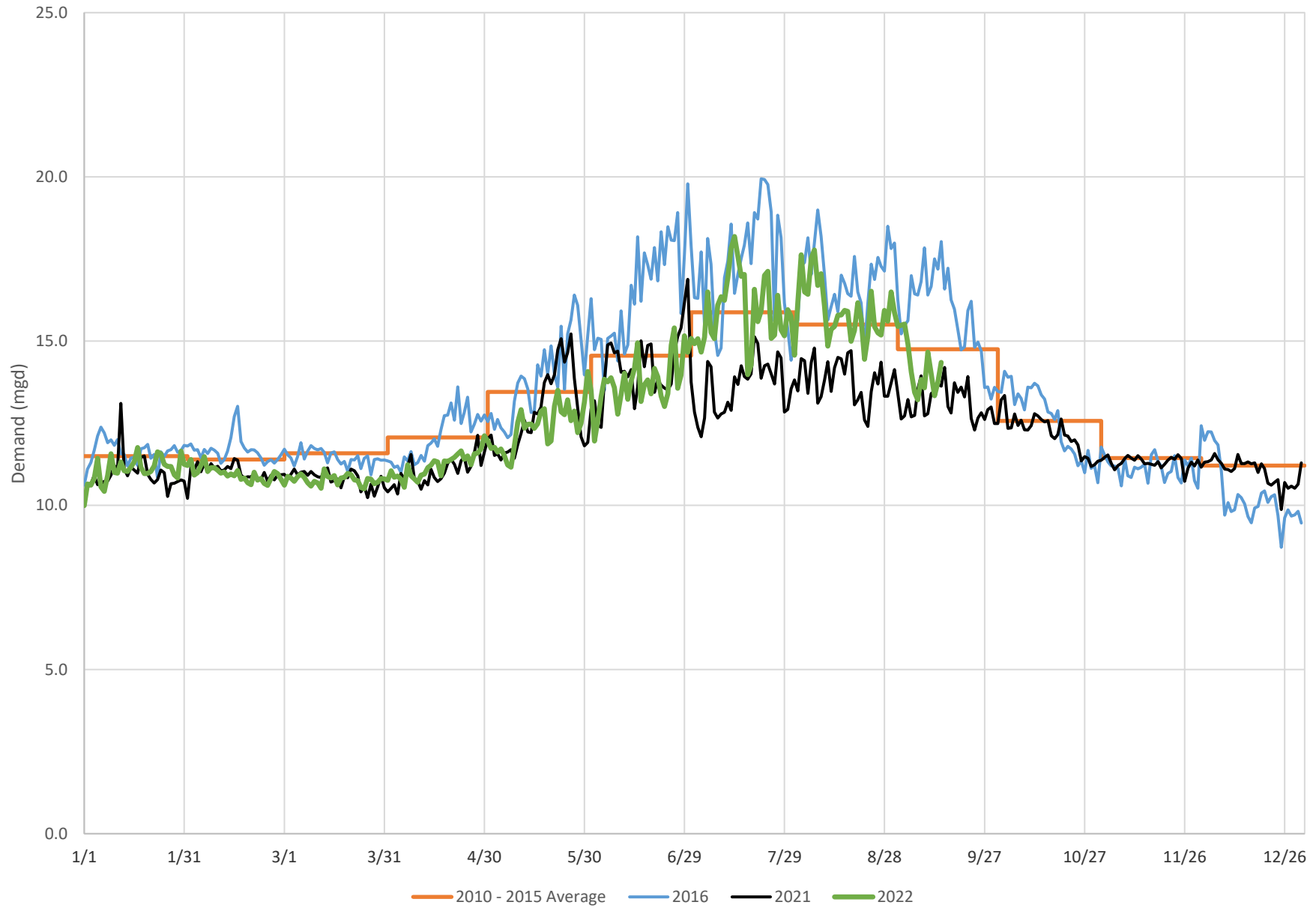
### Greenwich Demand Summary



Includes transfers to Suez

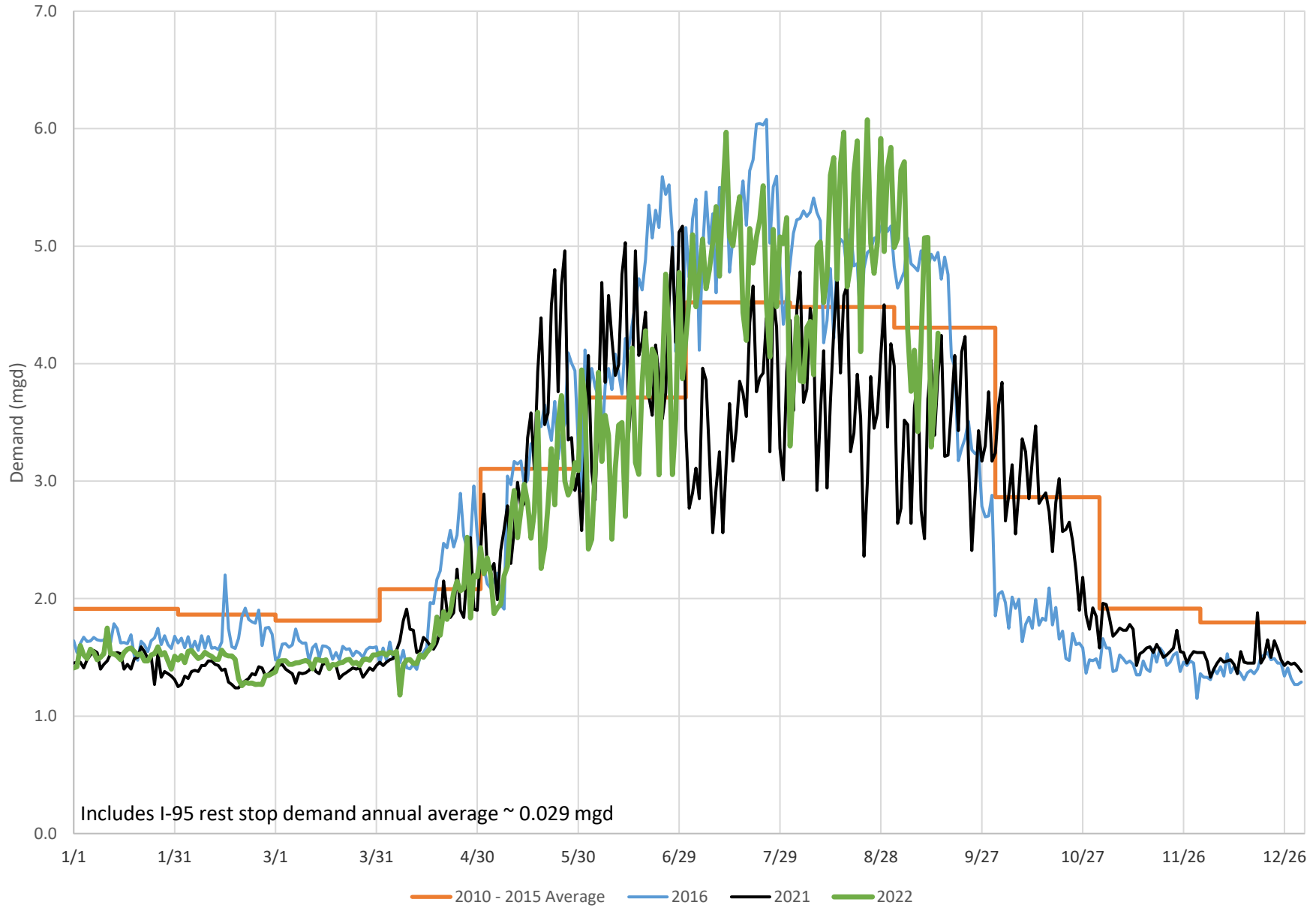


### Stamford Demand Summary



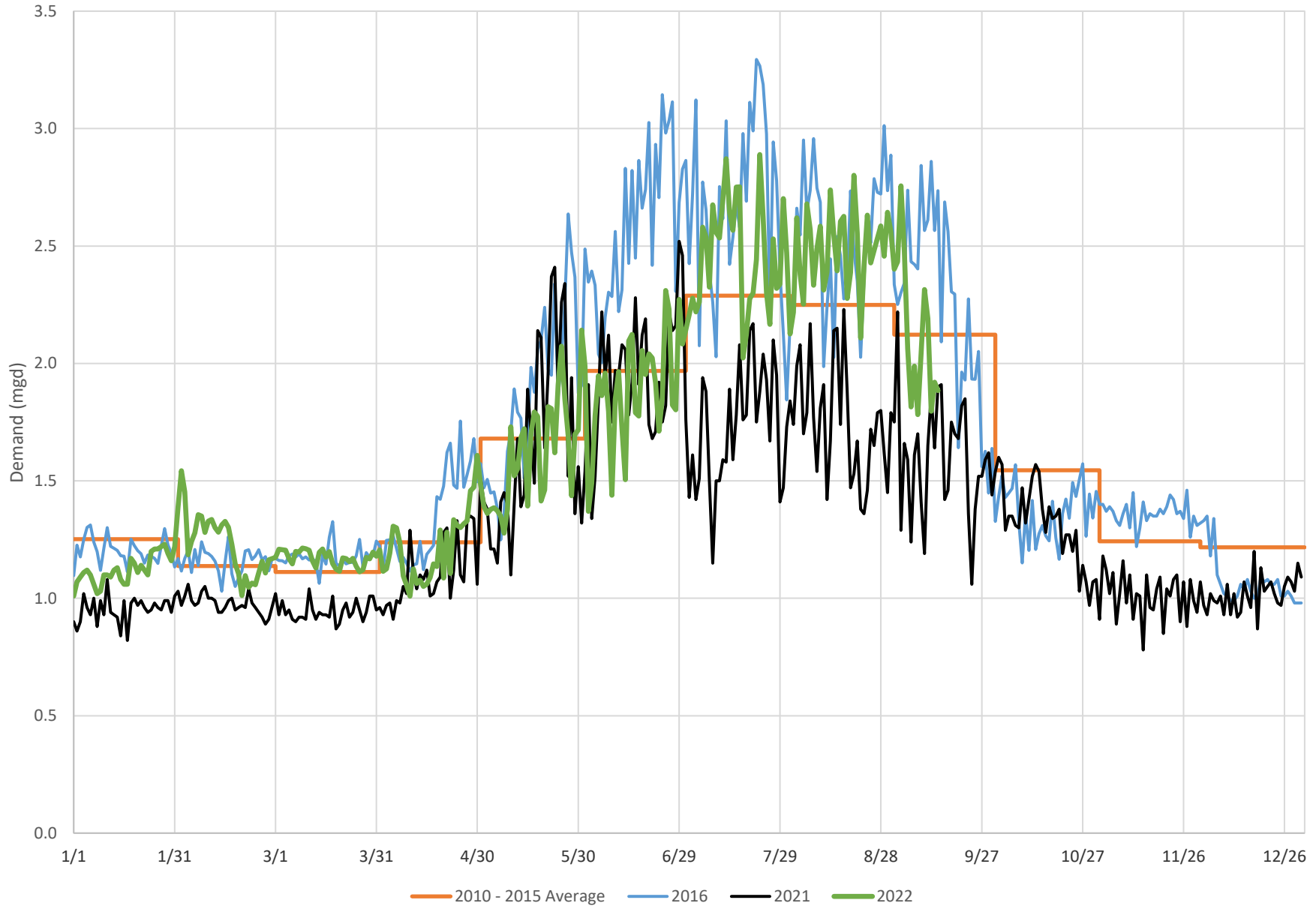


### Darien Demand Summary



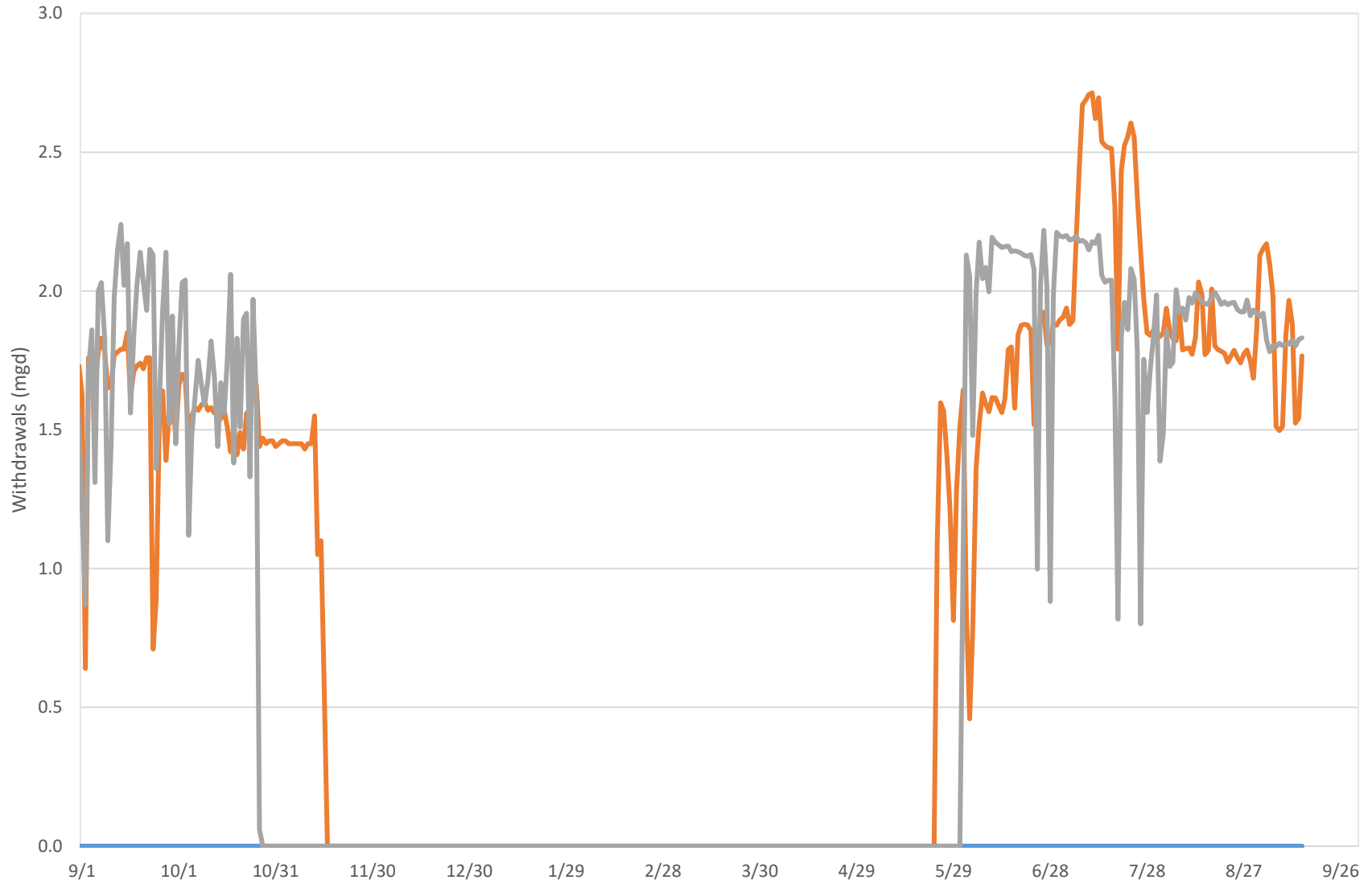


### New Canaan Demand Summary





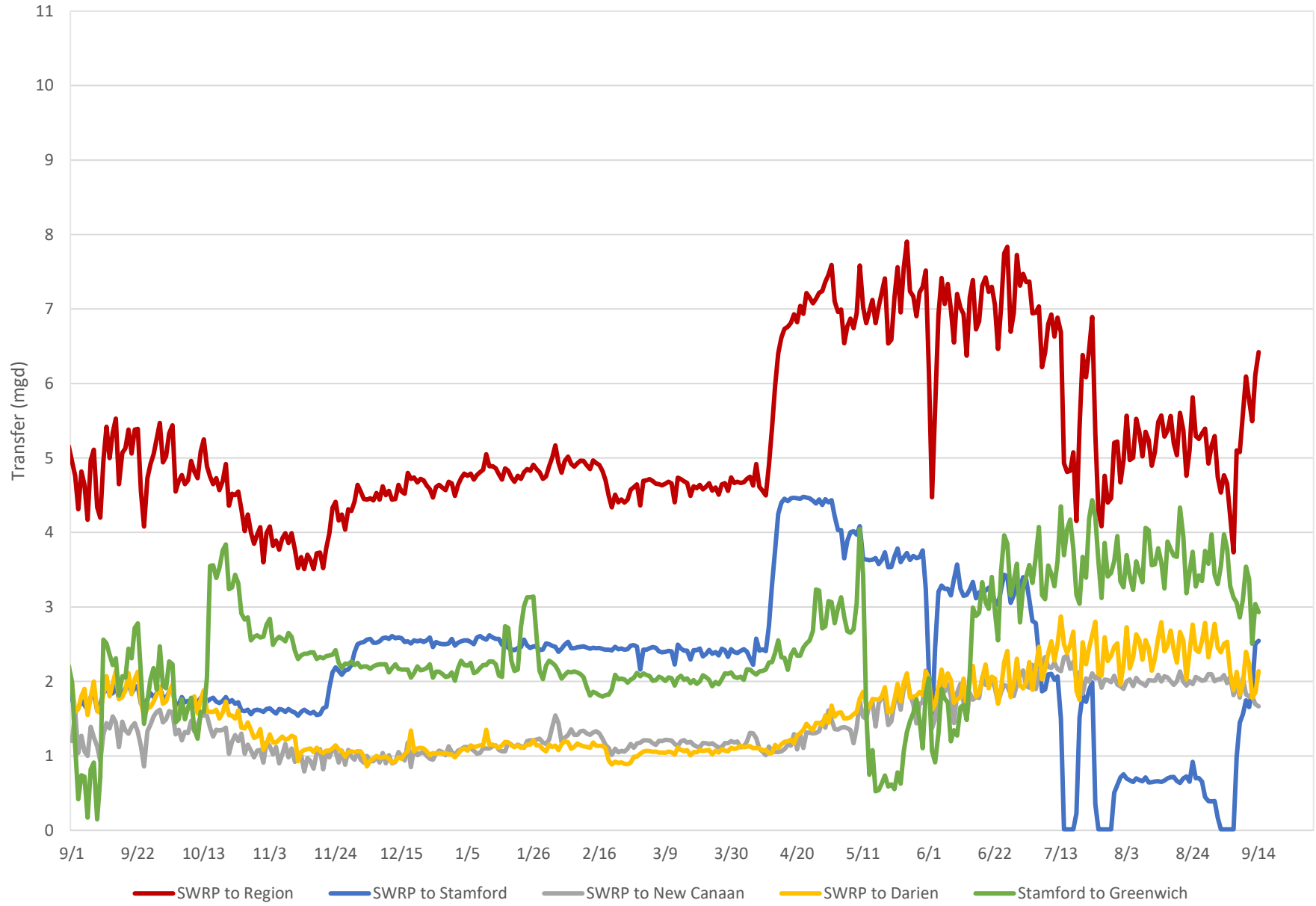
### Well Withdrawals



— Rewak (Darien)    — Wire Mill (Stamford)    — Canal St (Westport)    — Coleytown (Westport)

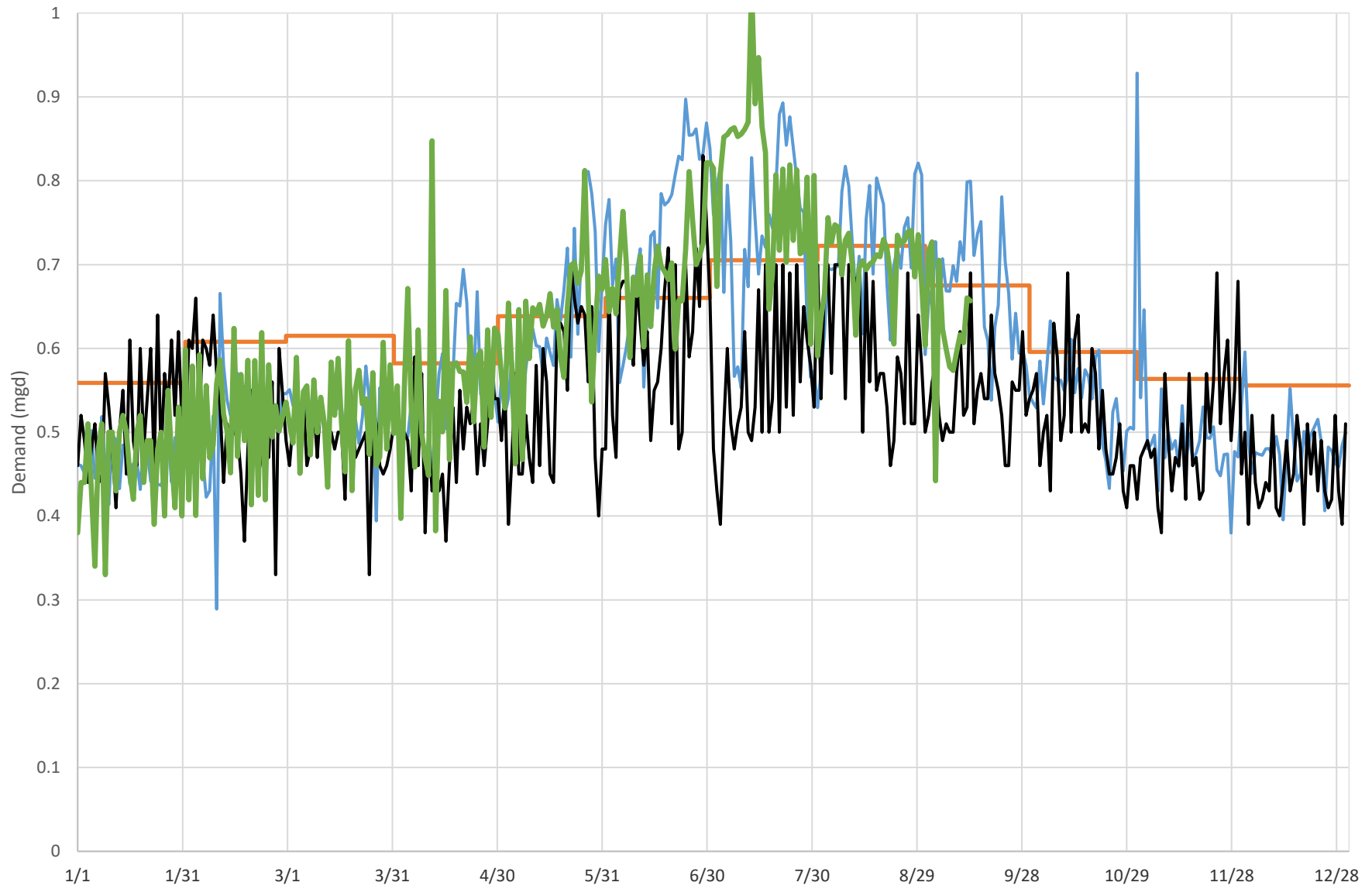


### Regional Water Transfers





### Town of Newtown Demand Summary



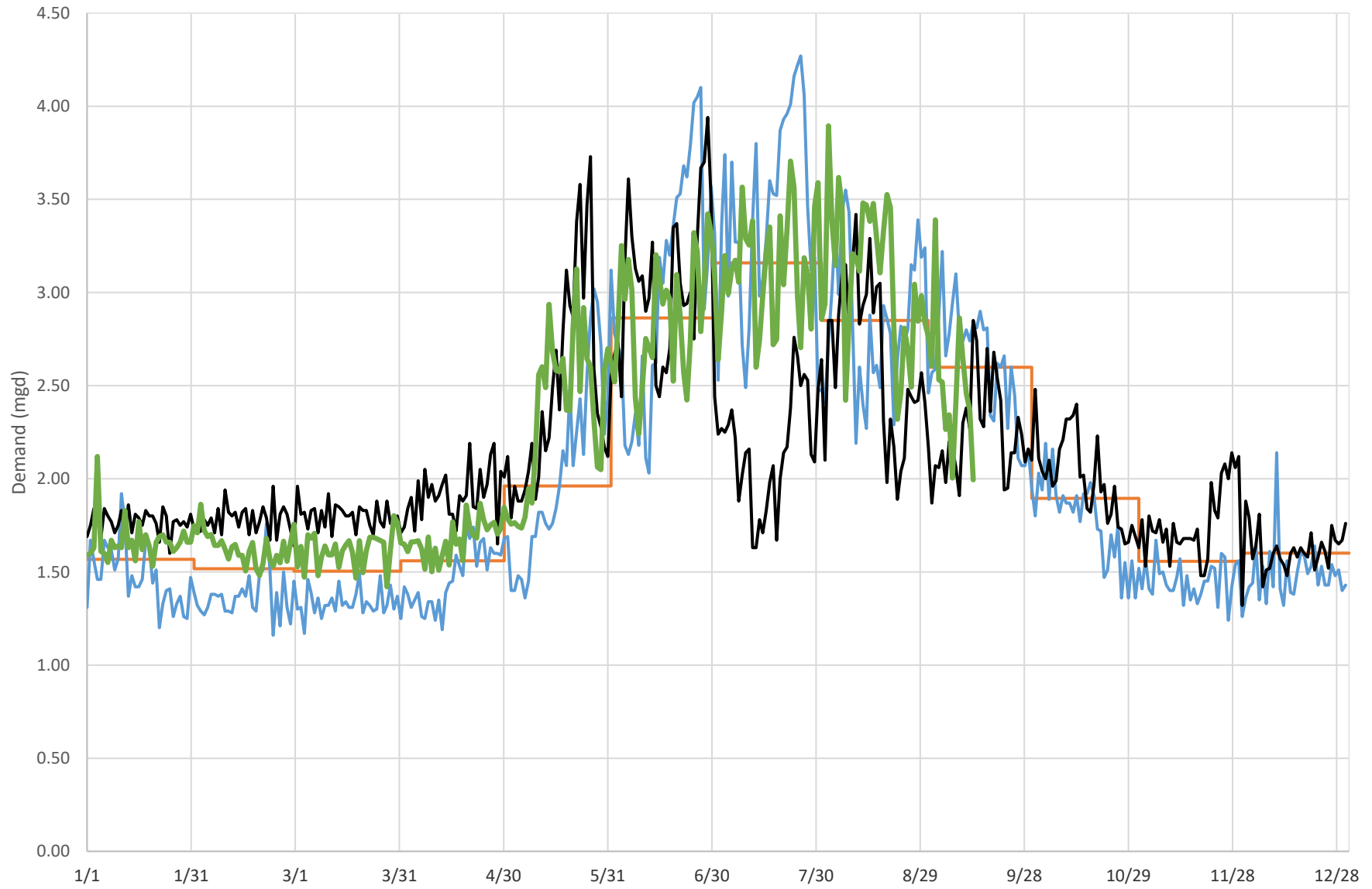
Newtown + Olmstead Systems

— 2013 - 2017 Average — 2016 — 2021 — 2022  
2013-2017 average corrected for meter inaccuracy





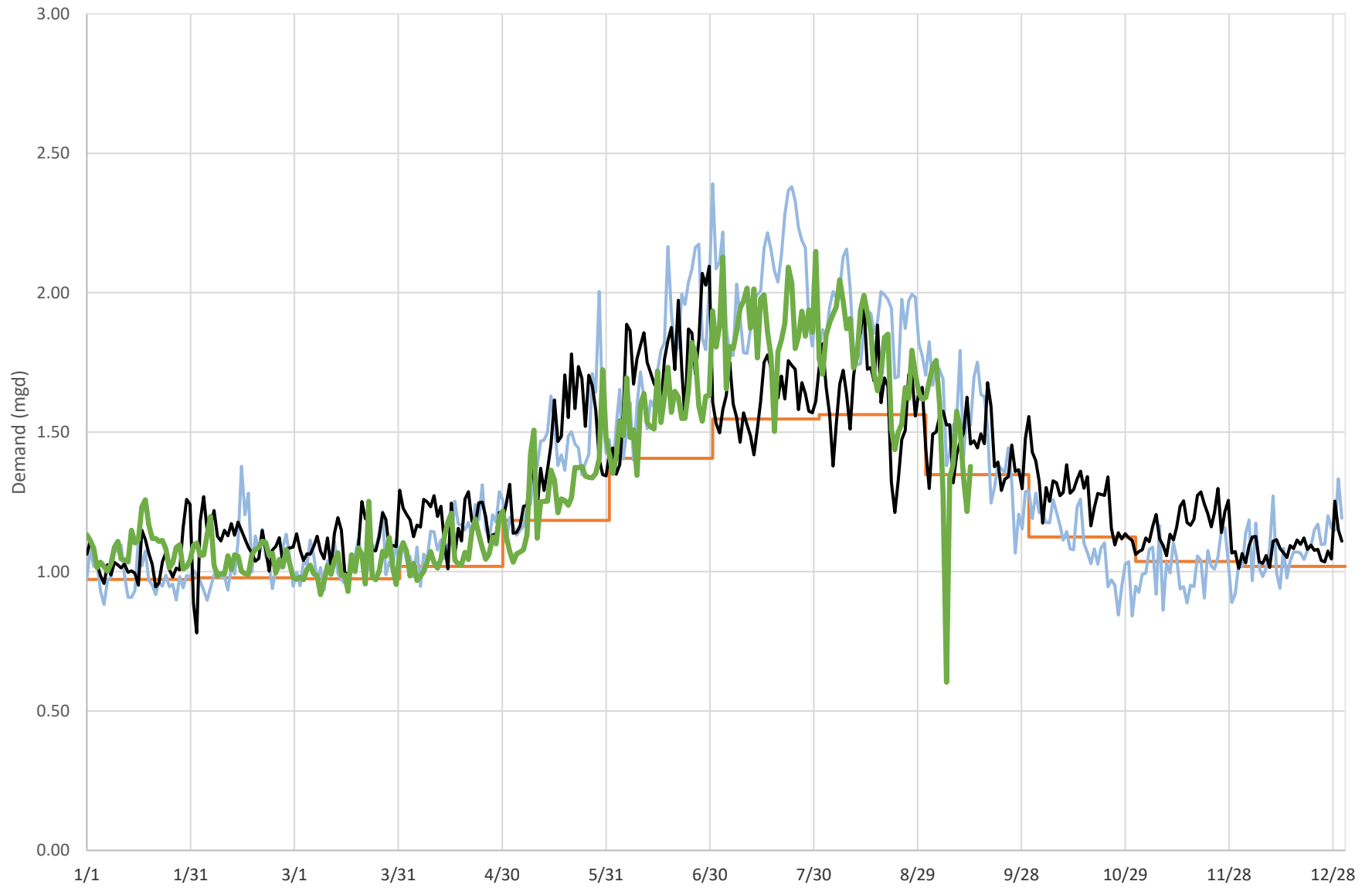
### Simsbury System Demand Summary



Includes Simsbury, Granby and East Granby — 2016 - 2020 Average — 2016 — 2021 — 2022



### Mystic System Demand Summary

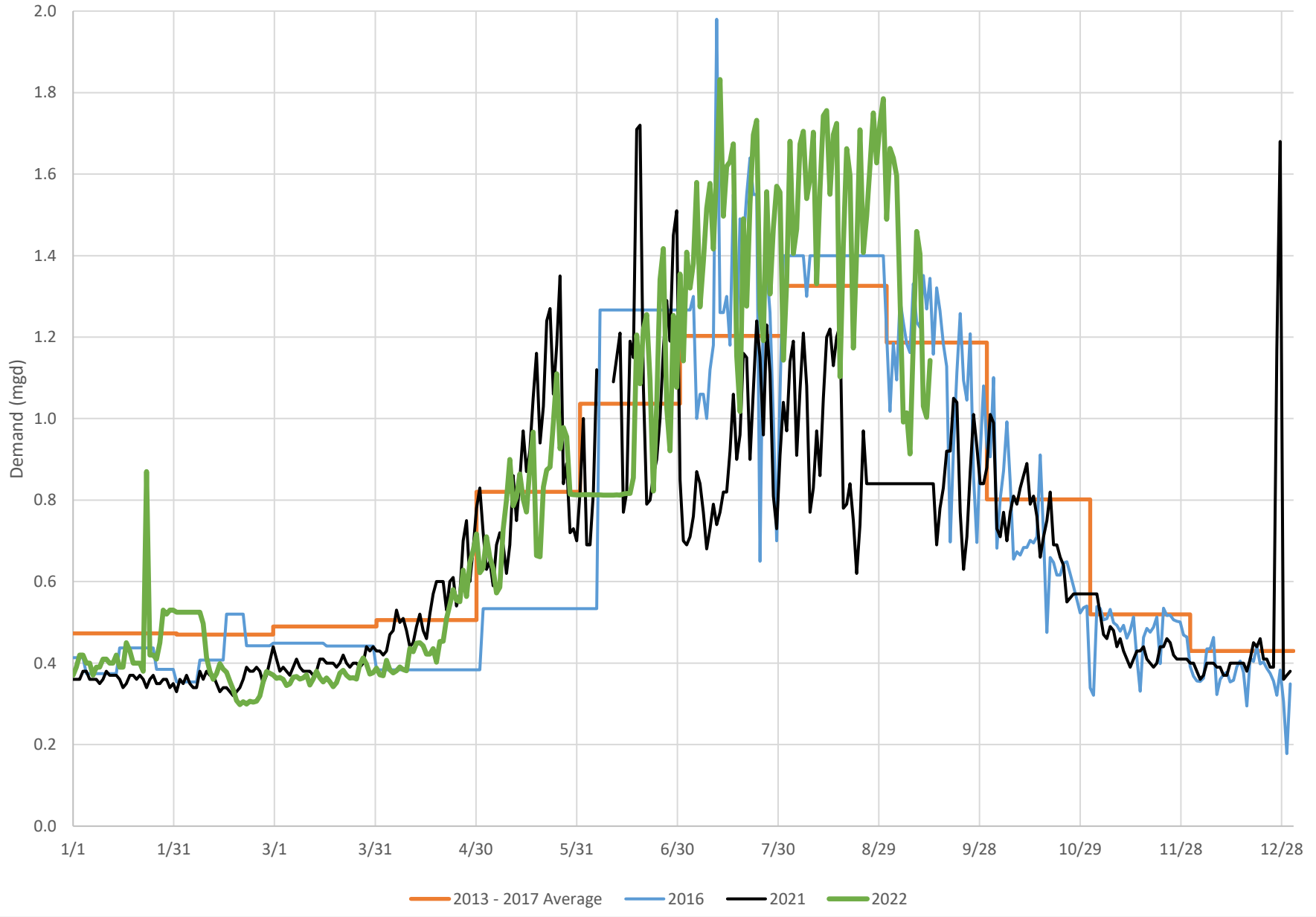


Includes Stonington and Groton

— 2017 - 2021 Average    — 2016    — 2021    — 2022  
2017 - 2021 average corrected for meter inaccuracy



### Westport North Ave Service Area Demand Summary





### Fairfield Greenfield Hill Service Area Demand Summary

